

# Peer Effects, Teacher Incentives, and the Impact of Tracking: Evidence from a Randomized Evaluation in Kenya

Esther Duflo, Pascaline Dupas, and Michael Kremer\*

March 20, 2010

To the extent that students benefit from high-achieving peers, tracking will help strong students and hurt weak ones. However, all students may benefit if tracking allows teachers to better tailor their instruction level. Lower-achieving pupils are particularly likely to benefit from tracking when teachers have incentives to teach to the top of the distribution. We propose a simple model nesting these effects, and test its implications in a randomized tracking experiment conducted with 121 primary schools in Kenya. While the direct effect of high-achieving peers is positive, tracking benefited lower-achieving pupils indirectly by allowing teachers to teach at their level.

*JEL Codes:* O1, I20

---

\* Duflo: Abdul Latif Jameel Poverty Action Lab (J-PAL), Massachusetts Institute of Technology, Paris School of Economics, National Bureau of Economic Research (NBER), and Bureau for Research and Economic Analysis of Development (BREAD) ([eduflo@mit.edu](mailto:eduflo@mit.edu)). Dupas: UCLA, J-PAL, NBER, and BREAD. ([pdupas@econ.ucla.edu](mailto:pdupas@econ.ucla.edu)). Kremer: Harvard University, Brookings, Center for Global Development (CGD), J-PAL, NBER, and BREAD ([mkremer@fas.harvard.edu](mailto:mkremer@fas.harvard.edu)). We thank Josh Angrist, Abhijit Banerjee, Michael Greenstone, Caroline Hoxby, Guido Imbens, Brian Jacob, and many seminar participants for helpful comments and discussions. We thank four anonymous referees for their suggestions. We thank the Kenya Ministry of Education, Science and Technology, International Child Support Africa, and Matthew Jukes for their collaboration. We thank Jessica Morgan, Frank Schilbach, Ian Tomb, Paul Wang, Nicolas Studer, and especially Willa Friedman for excellent research assistance. We are grateful to Grace Makana and her field team for collecting all the data. We thank, without implicating, the World Bank and the Government of the Netherlands for the grant that made this study possible.

To the extent that students benefit from having higher-achieving peers, tracking students into separate classes by prior achievement could disadvantage low-achieving students while benefiting high-achieving students, thereby exacerbating inequality (Denis Epple, Elizabeth Newton and Richard Romano, 2002). On the other hand, tracking could potentially allow teachers to more closely match instruction to students' needs, benefiting all students. This suggests that the impact of tracking may depend on teachers' incentives. We build a model nesting these effects. In the model, students can potentially generate direct student-to-student spillovers as well as indirectly affect both the overall level of teacher effort and teachers' choice of the level at which to target instruction. Teacher choices depend on the distribution of students' test scores in the class as well as on whether the teacher's reward is a linear, concave, or convex function of test scores. The further away a student's own level is from what the teacher is teaching, the less the student benefits; if this distance is too great, she does not benefit at all.

We derive implications of this model, and test them using experimental data on tracking from Kenya. In 2005, 140 primary schools in western Kenya received funds to hire an extra grade one teacher. Of these schools, 121 had a single first-grade class, which they split into two sections, with one section taught by the new teacher. In 60 randomly selected schools, students were assigned to sections based on initial achievement. In the remaining 61 schools, students were randomly assigned to one of the two sections.

We find that tracking students by prior achievement raised scores for all students, even those assigned to lower achieving peers. On average, after 18 months, test scores were 0.14 standard deviations higher in tracking schools than in non-tracking schools (0.18 standard deviations higher after controlling for baseline scores and other control variables). After controlling for the baseline scores, students in the top half of the pre-assignment distribution gained 0.19 standard deviations, and those in the bottom half gained 0.16 standard deviations. Students in all quantiles benefited from tracking. Furthermore, tracking had a persistent impact: one year after tracking ended, students in tracking schools scored 0.16 standard deviations higher (0.18 standard deviations higher with control variables). This first set of findings allows us to reject a special case of the model, in which all students benefit from higher-achieving peers but teacher behavior does not respond to class composition.

Our second finding is that students in the middle of the distribution gained as much from tracking as those at the bottom or the top. Furthermore, when we look within

tracking schools using a regression discontinuity analysis, we cannot reject the hypothesis that there is no difference in endline achievement between the lowest scoring student assigned to the high-achievement section and the highest scoring student assigned to the low-achievement section, despite the much higher-achieving peers in the upper section.

These results are inconsistent with another special case of the model, in which teachers are equally rewarded for gains at all levels of the distribution, and so would choose to teach to the median of their classes. If this were the case, instruction would be less well-suited to the median student under tracking. Moreover, students just above the median would perform much better under tracking than those just below the median, for while they would be equally far away from the teacher's target teaching level, they would have the advantage of having higher-achieving peers.

In contrast, the results are consistent with the assumption that teachers' rewards are a convex function of test scores. With tracking, this leads teachers assigned to the lower-achievement section to teach closer to the median student's level than those assigned to the upper section, although teacher effort is higher in the upper section. In such a model, the median student may be better off under tracking and may potentially be better off in either the lower-achievement or higher-achievement section.

The assumption that rewards are a convex function of test scores is a good characterization of the education system in Kenya and in many developing countries. The Kenyan system is centralized, with a single national curriculum and national exams. To the extent that civil-service teachers face incentives, those incentives are based on the scores of their students on the national primary school exit exam given at the end of eighth grade. But since many students drop out before then, the teachers have incentives to focus on the students at the top of the distribution. While these incentives apply more weakly in earlier grades, they likely help maintain a culture in the educational system that is much more focused on the top of the distribution than in the United States. Moreover, teacher training is focused on the curriculum and many students fall behind it. Indeed, Paul Glewwe, Michael Kremer, and Sylvie Moulin (2009) show that textbooks based on the curriculum benefited only the initially higher-achieving students, suggesting that the exams and associated curriculum are not well-suited to the typical student. It may also be the case that teachers find it easier and more personally rewarding to focus their teaching on strong students, in which case, in the absence of specific incentives otherwise, they will tend to do that.

The model also has implications for the effects of the test score distribution in non-tracking schools. Specifically, it suggests that an upward shift of the distribution of peer achievement will strongly raise test scores for a student with initial achievement at the top of the distribution, have an ambiguous impact on scores for a student closer to the middle, and raise scores at the bottom. This is so because, while all students benefit from the direct effect of an increase in peer quality, the change in peer composition also generates an upward shift in the teacher's instruction level. The higher instruction level will benefit students at the top; hurt those students in the middle who find themselves further away from the instruction level; and leave the bottom students unaffected, since they are in any case too far from the target instruction level to benefit from instruction. Estimates exploiting the random assignment of students to sections in non-tracking schools are consistent with these implications of the model.

While we do not have direct observations on the instruction level and how it varied across schools and across sections in our experiment, we present some corroborative evidence that teacher behavior was affected by tracking. First, teachers were more likely to be in class and teaching in tracking schools, particularly in the high-achievement sections, a finding consistent with the model's predictions. Second, students in the lower half of the initial distribution gained comparatively more from tracking in the most basic skills, while students in the top half of the initial distribution gained more from tracking in the somewhat more advanced skills. This finding is consistent with the hypothesis that teachers are tailoring instruction to class composition, although this could also be mechanically true in any successful intervention.

Rigorous evidence on the effect of tracking on learning of students at various points of the prior achievement distribution is limited and much of it comes from studies of tracking in the U.S., a context that may have limited applicability for education systems in developing countries. Reviewing the early literature, Julian Betts and Jamie Shkolnik (1999) conclude that while there is an emerging consensus that high-achievement students do better in tracking schools than in non-tracking schools and that low-achievement students do worse, the consensus is based largely on invalid comparisons. When they compare similar students in tracking and non-tracking high schools, Betts and Shkolnik (1999) conclude that low-achieving students are neither hurt nor helped by tracking; top students are helped; and there is some evidence that middle-scoring students may be hurt.

Another difficulty is that tracking schools may be different from non-tracking schools. Allen Manning and Jörn-Steffen Pischke (2006) show that controlling for baseline scores is not sufficient to eliminate the selection bias when comparing students attending comprehensive versus selective schools in the United Kingdom. Three recent studies that tried to address the endogeneity of tracking decisions have found that tracking might be beneficial to students, or at least not detrimental, in the lower-achievement tracks. First, David Figlio and Marianne Page (2002) compare achievement gains across similar students attending tracking and non-tracking schools in the U.S. This strategy yields estimates that are very different from those obtained by comparing individuals schooled in different tracks. In particular, Figlio and Page (2002) find no evidence that tracking harms lower-achievement students. Second, Ron Zimmer (2003), also using U.S. data, finds quasi-experimental evidence that the positive effects of achievement-specific instruction associated with tracking overcome the negative peer effects for students in lower-achievement tracks. Finally, Lars Lefgren (2004) finds that, in Chicago public schools, the difference between the achievement of low and high achieving students is no greater in schools that track than in schools that do not.

This paper is also related to a large literature that investigates peer effects in the classroom (e.g., Caroline Hoxby, 2000; David Zimmerman, 2003; Joshua Angrist and Kevin Lang, 2004; see Epple and Romano (forthcoming) for a recent review). While this literature has, mainly for data reasons, focused mostly on the direct effect of peers, there are a few exceptions, and these have results generally consistent with ours. Hoxby and Gretchen Weingarth (2006) use the frequent re-assignment of pupils to schools in Wake County to estimate models of peer effects, and find that students seem to benefit mainly from having homogeneous peers, which they attribute to indirect effects through teaching practices. Victor Lavy, Daniele Paserman and Annalia Schlosser (2008) find that the fraction of repeaters in a class has a negative effect on the scores of the other students, in part due to deterioration of the teacher's pedagogical practices. Finally, Damon Clark (2010) finds no impact on test scores of attending selective schools for marginal students who just qualified for the elite school on the basis of their score, suggesting that the level of teaching may be too high for them.

It is impossible to know if the results of this study will generalize until further studies are conducted in different contexts, but it seems likely that the general principle will hold: it will be difficult to assess the impact of tracking based solely on small random

variations in peer composition that are unlikely to generate big changes in teacher behavior. Our model suggests that tracking may be particularly beneficial for low-achieving students when teachers' incentives are to focus on students who are above median achievement levels. Education systems are typically complex, having reward functions for schools and teachers that generate various threshold effects at different test score levels. But virtually all developing countries' teachers have incentives to focus on the strongest students. This suggests that our estimate of large positive impacts of tracking would be particularly likely to generalize to those contexts. This situation also seems to often be the norm in developed countries, with a few exceptions, such as the No Child Left Behind program in the U.S.

The remainder of this paper proceeds as follows: Section I presents a model nesting various mechanisms through which tracking could affect learning. Section II provides background on the Kenyan education system, and describes the study design, data, and estimation strategy. Section III presents the main results on test scores. Section IV presents additional evidence on the impact of tracking on teacher behavior. Section V concludes and discusses policy implications.

## I. Model

We consider a model that nests several channels through which tracking students into two streams (a lower track and an upper track) could affect students' outcomes. In particular, the model allows peers to generate both direct student-to-student spillovers as well as to indirectly affect both the overall level of teacher effort and teachers' choice of the level at which to target instruction.<sup>1</sup> However, the model also allows for either of these channels to be shut off. Within the subset of cases in which the teacher behavior matters, we will consider the case in which teachers' payoffs are convex, linear, or concave in student test scores.

Suppose that educational outcomes for student  $i$  in class  $j$ ,  $y_{ij}$ , are given by:

$$y_{ij} = x_{ij} + f(\bar{x}_{-ij}) + g(e_j)h(x_j^* - x_{ij}) + u_{ij} \quad (1)$$

where  $x_{ij}$  is the student's pretest score,  $\bar{x}_{-ij}$  is the average score of other students in the class,  $e_j$  is teacher effort, is the target level to which the teacher orients instruction, and

---

<sup>1</sup> Epple, Newton and Romano (2002) consider the equilibrium implications of tracking in public schools in a model where the indirect effect of peer through teacher effort is shut off, but private schools can choose whether or not to track, and students can choose which school to attend.

$u_{ij}$  represents other i.i.d. stochastic student and class-specific factors that are symmetric and single-peaked. In this equation,  $f(\bar{x}_{-ij})$  reflects the direct effect of a student's peers on learning, e.g. through peer-to-peer interactions. For simplicity of exposition, in what follows we remove the class indices.

We will focus on the case when  $h$  is a decreasing function of the absolute value of the difference between the student's initial score and the target teaching level, and is zero when  $x_i - x^* > \theta$ , although we also consider the possibility that  $h$  is a constant, shutting down this part of the model. Furthermore, we assume that  $g(\cdot)$  is increasing and concave.

The teacher chooses  $x^*$  and  $e^*$  to maximize a payoff function  $P$  of the distribution of children's endline achievement minus the cost of effort  $c(e)$  where  $c(\cdot)$  is a convex function. We assume that the marginal cost to teachers of increasing effort eventually becomes arbitrarily high as teacher effort approaches some level  $\bar{e}$ . We will also consider the case in which the cost of effort is zero below  $\bar{e}$ , so teachers always choose effort  $\bar{e}$  and this part of the model shuts down. There are two kinds of teachers: civil servants, and contract teachers hired to teach the new sections in the ETP program. Contract teachers have higher-powered incentives than civil servants and, as shown in Duflo, Dupas and Kremer (2010) put in considerably more effort. In particular, we will assume that the reward to contract teachers from any increment in test scores equals  $\lambda$  times the reward to civil service teachers from the same increment in test scores, where  $\lambda$  is considerably greater than 1.

The choice of  $x^*$  will depend on the distribution of pre-test scores.<sup>2</sup> We assume that within each school the distribution of initial test scores is continuous, strictly quasi-concave, and symmetric around the median. This appears to be consistent with our data (see Figure I).

With convexity of teachers' payoffs in both student test scores and teacher effort in general, there could be multiple local maxima for teachers' choice of effort and  $x^*$ .

---

<sup>2</sup> We rule out the possibility that teachers divide their time between teaching different parts of the class. In this case, tracking could reduce the number of levels at which a teacher would need to teach and thus increase the proportion of time students benefited from instruction. We also rule out fixed costs in adjusting the focus teaching level  $x^*$ . If teachers face such fixed costs, they will optimally use some type of Ss adjustment rule for  $x^*$ . In this case, teachers will be more likely to change  $x^*$  in response to large changes in the composition of student body associated with tracking than in response to small changes associated with random fluctuations in class composition. As discussed below, we think the evidence is consistent with the hypothesis that some teachers change their teaching techniques even in response to random fluctuations in class composition. Fixed costs of changing  $x^*$  may not be that great because this change may simply mean proceeding through the same material more slowly or more quickly.

Nonetheless, it is possible to characterize the solution, at least under certain conditions. Our first proposition states a testable implication of the special case where peers only affect each other directly.

**Proposition 1:** Consider a special case of the model in which teachers do not respond to class composition because  $h(\cdot)$  is a constant and either  $g(\cdot)$  is a constant or the cost of effort is zero below  $\bar{e}$ . In that case, tracking will reduce test scores for those below the median of the original distribution and increase test scores for those above the median.

*Proof:* Under tracking, average peer achievement is as high as possible (and, hence, higher than without tracking) for students above the median and as low as possible (and, hence, lower than without tracking) for students below the median. ■

Note that this proposition would be true even with a more general equation for test scores that allowed for interactions between students own test scores and those of their peers, as long as students always benefit from higher achieving peers.

Proposition 2 describes the optimal choice of  $x^*$  for a teacher as a function of the shape of the reward function.

**Proposition 2:** If teacher payoffs,  $P$ , are convex in post-test scores, in a non-tracked class the target teaching level,  $x^*$ , must be above the median of the distribution. If teacher payoffs are linear in post-test scores, then  $x^*$  will be equal to the median of the distribution. If teacher payoffs are concave in post-test scores, then  $x^*$  will be below the median of the distribution.

*Proof:* In web appendix.

Building on these results, proposition 3 considers the overall effect of a uniform shift in the distribution of peer baseline test scores on one's test score, depending on one's place in the initial distribution. Such a shift has two effects: a direct effect (through the quality of the peer group) and an indirect effect, (through the teacher effort and choice of  $x^*$ ). The overall effect depends on  $f(\cdot)$ ,  $h(\cdot)$ , and on the student's initial level.

**Proposition 3:**

- If  $f(\cdot)$  is increasing in peer test scores, then a uniform marginal increase in peer baseline achievement: will raise test scores for any student with initial score



$x_i > x^*$ , and the effect will be the largest for students with  $x^* < x_i < x^* + \theta$ ; will have an ambiguous effect on test scores for students with initial scores  $x^* - \theta \leq x_i \leq x^*$ ; and will increase test scores for students with initial scores below  $x^* - \theta$ , although the increase will be smaller than that for students with initial scores greater than  $x^*$ .

- If  $f(\cdot)$  is a constant, so there is no direct effect of peers, then a uniform increase in peer achievement will cause students with  $x_i > x^*$  to have higher test scores and those with  $x^* - \theta \leq x_i \leq x^*$  to have lower scores. There will be no change in scores for those with  $x_i < x^* - \theta$ .

*Proof:* in web appendix.

**Proposition 4:** Let  $x_L^*$  denote the target teaching level in the lower section in a tracking school and  $x_U^*$  denote the target level in the upper section. If payoffs are convex,  $x_L^*$  will be within distance  $\theta$  of  $x_m$ , where  $x_m$  denotes the median of the original distribution. If payoffs are concave,  $x_U^*$  will be within distance  $\theta$  of  $x_m$ . If payoffs are linear, both  $x_U^*$  and  $x_L^*$  will be within distance  $\theta$  of  $x_m$ .

*Proof:* To see this for the convex case, suppose that  $x_L^* < x_m - \theta$ . Marginally increasing  $x^*$  would both increase the number of students at any distance from  $x^*$  and the base score  $x_i$  of students at any distance from  $x^*$ . Thus it would be preferred. Proofs for the other cases are analogous. ■

**Proposition 5:** Denote the distance between  $x_m$  and the target teaching level in the upper section  $x_U^*$  as  $D_U$  and denote the corresponding distance between  $x_L^*$  and  $x_m$  as  $D_L$ . If payoffs are convex and the third derivative is non-negative, then  $D_U > D_L$ , so the median student is closer to the target teaching level in the lower track. If payoffs are linear in student scores then  $D_U = D_L$ . If teacher payoffs are concave in student test scores and the third derivative is non-positive, then  $D_U < D_L$ .

*Proof:* in web appendix.

This proposition implies that, with a convex reward function, the median student in a tracking school will be closer to the target teaching level if assigned to the lower track than if assigned to the upper track.

**Proposition 6:** Teacher effort will be greater in the upper than in the lower section under convexity, equal under linearity, and lesser under concavity. However, for high enough  $\lambda$ , the difference between effort levels of contract teachers assigned to the high- and low-achievement sections will become arbitrarily small.

*Proof:* In web appendix.

**Proposition 7.** Under a linear teacher payoff function, a student initially at the median of the distribution will score higher if assigned to the upper section than the lower section under tracking.

*Proof:* Under linear teacher payoffs, a student at the median will experience equal teacher effort in the upper and lower sections, and will be equally far from the target teaching level. However, the student will have stronger peers in the top section. ■

Note that under convex teacher payoffs, the student at the median will experience higher teacher effort in the top section (compared to the bottom section) and will have stronger peers but will have teaching which is not as good a match for his or her initial achievement. The model therefore offers no definitive prediction on whether the median student performs better in the upper or lower track. The effect of the level of instruction could offset the two positive effects if the teacher payoffs are sufficiently convex, or if the  $h()$  function is declining quickly from its peak.

Similarly, if teacher payoffs are concave in student test scores, then the median student would have a more appropriate teaching target level, and better peers, but lower teacher effort in the top section. Once again, there is no clear prediction.

The model, however, has a more definite prediction on the effect of the interaction between the teacher type (contract teacher versus civil-service teacher) and the assignment of the median student.

**Proposition 8.** For high enough  $\lambda$ , if teacher payoffs are convex in students' test scores, the gap in endline test scores between a median student assigned to the upper track and his counterfactual assigned to the lower track is larger when teachers are civil-servants than when teachers are contract teachers. The converse is true if payoffs are concave.

*Proof:* For high enough  $\lambda$ , the difference in effort levels of contract teachers assigned to the top and bottom tracks becomes arbitrarily small. Hence, with a contract teacher, in the convex case, students assigned to the bottom section do not suffer much from reduced teacher effort, relative to students assigned to the top section. Similarly, with a concave

payoff function, students assigned to the bottom class do not benefit much from increased effort with contract teachers.

This model nests, as special cases, models with only a direct effect of peers or only an effect going through teacher behavior. It also nests special cases in which teacher payoffs are linear, concave, or convex in students' test scores. Nevertheless, the model makes some restrictive assumptions. In particular, teacher effort has the same impact on student test score gains anywhere in the distribution. In a richer model, teacher effort might have a different impact on test scores at different places along the distribution. Student effort might also respond endogenously to teacher effort and the target teaching level. In such a model, ultimate outcomes will be a composite function of teacher effort, teacher focus level, and student effort, which in turn would be a function of teacher effort and teaching level. In this case, we conjecture that the results would go through as long as the curvature assumptions on the payoff function were replaced by curvature assumptions on the resulting composite function for payoffs. However, multiplicative separability of  $e$  and  $x^*$  is important for the results.

Propositions 1, 2, and 4 provide empirical implications that can be used to test whether the data is consistent with the different special cases.

Below we argue that the data are inconsistent with the special case with no teacher response, the special case with no direct effects of peers, and the special case in which teacher payoffs are linear or concave in students' scores. However, our results are consistent with a model in which both direct and indirect effects operate and teachers' payoffs are convex with student test scores, which is consistent with our description of the education system in Kenya.

Note that this model has no clear prediction for the effect of the variance of initial achievement on test scores in an untracked class or for the interaction between the effect of tracking and the initial variance of the distribution.<sup>3</sup>

---

<sup>3</sup> To see that changes in the distribution of initial scores that increase variance of these scores could reduce average test scores and the effect of tracking, consider an increase in dispersion so no two students are within distance  $\theta$  of each other. Then teachers can never teach more than one pupil. Average test scores will be low, and tracking will not enable teachers to target the instructional level so as to reach more pupils. To see that changes in the distribution that increase variance could increase the impact of tracking, consider moving from a degenerate distribution, with all the mass concentrated at a single point, to a distribution with some dispersion. Tracking will have no effect on test scores with a degenerate distribution, but will increase average scores with tracking. Increases in dispersion could also increase average test scores in the absence of tracking. To see this, suppose teacher payoffs are very convex, so teachers focus on the

## **II. The Tracking Experiment: Background, Experimental Design, Data, and Estimation Strategy**

### **A. Background: Primary Education in Kenya**

Like many other countries, Kenya has a centralized education system with a single national curriculum and national exams. Glewwe, Kremer, and Moulin (2009) show that textbooks based on the curriculum benefited only the initially higher-achieving students, suggesting that the exams and associated curriculum are not well-suited to the typical student.

Most primary-school teachers are hired centrally through the civil service and they face weak incentives. As we show in Section 5, absence rates among civil-service teachers are high. In addition, some teachers are hired on short-term contracts by local school committees, most of whose members are elected by parents. These contract teachers typically have much stronger incentives, partly because they do not have civil-service and union protection but also because a good track record as a contract teacher can help them obtain a civil-service job.

To the extent that schools and teachers face incentives, the incentives are largely based on their students' scores on the primary school exit exam. Many students repeat grades or drop out before they can take the exam, and so the teachers have limited incentives to focus on students who are not likely to ever take the exam. Extrinsic incentives are thus stronger at the top of the distribution than the bottom. For many teachers, the intrinsic rewards of teaching to the top of the class are also likely to be greater than those of teaching to the bottom of the class, as such students are more similar to themselves and teachers are likely to interact more with their families and with the students themselves in the future.

Until recently, families had to pay for primary school. Students from the poorest families often had trouble attending school and dropped out early. But recently, Kenya has, like several other countries, abolished school fees. This led to a large enrollment

---

strongest student in the class. Suppose also that the highest achieving student's initial score exceeds that of the second highest-scoring pupil by more than  $\theta$ . Consider a move from the initial distribution to a distribution with the same support, but in which some students were pushed to the boundaries of this support. More students will be within range of the teacher and hence teacher effort and average test scores will rise.

increase and to greater heterogeneity in student preparation. Many of the new students are first generation learners and have not attended preschools (which are neither free nor compulsory). Students thus differ vastly in age, school preparedness, and support at home.

## **B. Experimental Design**

This study was conducted within the context of a primary school class-size reduction experiment in Western Province, Kenya. Under the Extra-Teacher Program (ETP), with funding from the World Bank, ICS Africa provided 140 schools with funds to hire an additional first-grade teacher on a contractual basis starting in May 2005, the beginning of the second term of that school year.<sup>4</sup> The program was designed to allow schools to add an additional section in first grade. Most schools (121) had only one first grade section, and split it into two sections. Schools that already had two or more first grade sections added one section. Duflo, Dupas and Kremer (2010) reports on the effect of the class size reduction and teacher contracts.

We examine the impact of tracking and peer effects using two different versions of the ETP experiment. In 61 schools randomly selected (using a random number generator) from the 121 schools that originally had only one grade 1 section, grade 1 pupils were randomly assigned to one of two sections. We call these schools the “non-tracking schools.” In the remaining 60 schools (the “tracking schools”), children were assigned to sections based on scores on exams administered by the school during the first term of the 2005 school year. In the tracking schools, students in the lower half of the distribution of baseline exam scores were assigned to one section and those in the upper half were assigned to another section. The 19 schools that originally had two or more grade one classes were also randomly divided into tracking and non-tracking schools, but it proved difficult to organize the tracking consistently in these schools.<sup>5</sup> Thus, in the analysis that follows, we focus on the 121 schools that initially had a single grade 1 section and exclude 19 schools (10 tracking, 9 non-tracking schools) that initially had two or more.<sup>6</sup>

---

<sup>4</sup> The school year in Kenya starts in January and ends in November. It is divided into three terms, with month-long breaks in April and August.

<sup>5</sup> In these schools, the sections that were taught by civil service teachers rather than contract teachers sometimes recombined or exchanged students.

<sup>6</sup> Note that the randomization of schools into tracking and non-tracking was stratified according to whether the school originally had one or more grade 1 section.

After students were assigned to sections, the contract teacher and the civil-service teacher were randomly assigned to sections. Parents could request that their children be reassigned, but this only occurred in a handful of cases. The main source of noncompliance with the initial assignment was teacher absenteeism, which sometimes led the two grade 1 sections to be combined. On average across five unannounced school visits to each school, we found the two sections combined 14.4 percent of the time in non-tracking schools and 9.7 percent of time in tracking schools (note that the likelihood that sections are combined depends on teacher effort, itself an endogenous outcome, as we show below in Section 5). When sections were not combined, 92 percent of students in non-tracking schools and 96 percent of students in tracking schools were found in their assigned section. The analysis below is based on the initial assignment regardless of which section the student eventually joined.

The program lasted for 18 months, which included the last two terms of 2005 and the entire 2006 school year. In the second year of the program, all children not repeating the grade remained assigned to the same group of peers and the same teacher. The fraction of students who repeated grade 1 and thus participated in the program for only the first year was 23 percent in non-tracking schools and 21 percent in tracking schools (the p-value of the difference is 0.17).<sup>7</sup>

Table I presents summary statistics for the 121 schools in our sample. As would be expected given the random assignment, tracking and non-tracking schools look very similar. Since tests administered within schools prior to the program are not comparable across schools, they are normalized such that the mean score in each school is zero and the standard deviation is one. Figure II shows the average baseline score of a student's classmates as a function of the student's own baseline score in tracking and non-tracking schools. Average non-normalized peer test scores are not correlated with the student's own test score in non-tracking schools but, consistent with the discontinuous assignment at the 50<sup>th</sup> percentile for most schools, there is sharp discontinuity at the 50<sup>th</sup> percentile in

---

<sup>7</sup> Students enrolled in grade 2 in 2005 and who repeated grade 2 in 2006 were randomly assigned to either the contract teacher or the civil-service teacher in 2006. All the analysis is based on the initial assignment, so they are excluded from the study and excluded from the measures of peer composition at endline. Students who repeated grade 1 in 2006 remain in the data set and are included in the measures of peer composition at endline. New pupils who joined the school after the introduction of the program were assigned to a class on a random basis. However, since the decision for these children to enroll in a treatment or control school might be endogenous, they are excluded from the analysis. The number of newcomers was balanced across school types (tracking and non-tracking) at six per school on average.

tracking schools.<sup>8</sup> The baseline exams are a good measure of academic achievement, in that they are strongly predictive of the endline test we administered, with a correlation of 0.47 in the non-tracking schools and 0.49 in tracking schools. In tracking schools, the top section has somewhat more girls and students are 0.4 years older.

### **C. Data**

The sample frame consists of approximately 10,000 students enrolled in first grade in March 2005. The key outcome of interest is student academic achievement, as measured by scores on a standardized math and language test first administered in all schools 18 months after the start of the program. Trained enumerators administered the test, which was then graded blindly by enumerators. In each school, 60 students (30 per section) were drawn from the initial sample to participate in the tests. If a section had more than 30 students, students were randomly sampled (using a random number generated before enumerators visited the school) after stratifying by their position in the initial distribution. Part of the test was designed by a cognitive psychologist to measure a range of skills students might have mastered at the end of grade 2. Part of the test was written and part was orally administered one-to-one by trained enumerators. Students answered math and literacy questions ranging from identifying letters and counting to subtracting three-digit numbers and reading and understanding sentences.

To limit attrition, enumerators were instructed to go to the homes of sampled students who had dropped out or were absent on the day of the test, and to bring them to school for the test. It was not always possible to find those children, however, and the attrition rate on the test was 18 percent. There was no difference between tracking and non-tracking schools in overall attrition rates. The characteristics of those who attrited are similar across groups, except that girls in tracking schools were less likely to attrit in the endline test (see appendix table A1). Transfer rates to other schools were similar in tracking and non-tracking schools. In total, we have endline test score data for 5,796 students.

---

<sup>8</sup> Peer quality is slightly more similar for children below and above the 50<sup>th</sup> percentile than for students at other percentiles because the assignment procedure used a manually computed ranking variable that was very strongly correlated with the ranking based on the actual school grades but had a few discrepancies (due to clerical errors). Thus, some children close to the median who should have been assigned to one section wound up in the other one. We are using the rank based on the actual school grade as our control variable in what follows, in case the ranking variable that was used for assignment was in fact manipulated.

To measure whether program effects persisted, children sampled for the endline were tested again in November 2007, one year after the program ended. During the 2007 school year, students were overwhelmingly enrolled in grades for which their school had a single section, so tracking was no longer an option. Most students had reached grade 3, but repeaters were also tested. The attrition for this longer-term follow-up was 22 percent, only 4 points higher than attrition at the endline test. The proportion of attriters and their characteristics do not differ between the two treatment arms (appendix table A1).

We also collected data on grade progression and dropout rates, and student and teacher absence. Overall, the dropout rate among grade 1 students in our sample was low (below 0.5 percent). Several times during the course of the study, enumerators went to the schools unannounced and checked, upon arrival, whether teachers were present in school and whether they were in class and teaching. On those visits, enumerators also took a roll call of the students.

#### **D. Empirical Strategy**

##### *a) Measuring the Impact of Tracking*

To measure the overall impact of tracking on test scores, we run regressions of the form:

$$(E1) \quad y_{ij} = \alpha T_j + X_{ij}\beta + \epsilon_{ij}$$

where  $y_{ij}$  is the endline test score of student  $i$  in school  $j$  (expressed in standard deviations of the distribution of scores in the non-tracking schools),<sup>9</sup>  $T_j$  is a dummy equal to 1 if school  $j$  was tracking, and  $X_{ij}$  is a vector including a constant and child and school control variables (we estimate a specification without control variables and a specification that controls for baseline score, whether the child was in the bottom half of the distribution in the school, gender, age, and whether the section is taught by a contract or civil-service teacher).

To identify potential differential effects for children assigned to the lower and upper section, we also run:

$$(E2) \quad y_{ij} = \alpha T_j + \gamma T_j * B_{ij} + X_{ij}\beta + \epsilon_{ij}$$

where  $B_{ij}$  is a dummy variable that indicates whether the child was in the bottom half of the baseline score distribution in her school ( $B_{ij}$  is also included  $X_{ij}$ ). We also estimate a

---

<sup>9</sup> We have also experimented with an alternative specification of the endline test score for math, which uses item response theory to give different weights to questions of different levels of difficulty (the format of the language score was not appropriate for this exercise). The results were extremely similar (results available from the authors) so we focus on the standardized test scores in this version.



specification where treatment is interacted with the initial quartile of the child in the baseline distribution. Finally, to investigate flexibly whether the effects of tracking are different at different levels of the initial test score distribution, we run two separate non-parametric regressions of endline test scores on baseline test scores in tracking and non-tracking schools, and plot the results.

To understand better how tracking works, we also run similar regressions using as dependent variable a more disaggregated version of the test scores: the test scores in math and language, and the scores on specific skills. Finally, we also run regressions of a similar form, using as outcome variable teacher presence in school, whether the teacher is in class teaching, and student presence in school.

### *b) Non-tracking schools*

Since children were randomly assigned to a section in these schools, their peer group is randomly assigned and there is some naturally occurring variation in the composition of the groups.<sup>10</sup> In the sample of non-tracking schools, we start by estimating the effect of a student's peer average baseline test scores by OLS (this is the average of the section excluding the student him or herself):

$$(E3) \quad y_{ij} = \kappa \bar{x}_{-ij} + X_{ij} \beta + \nu_j + \epsilon_{ij}$$

where  $\bar{x}_{-ij}$  is the average peer baseline test score in the section to which a student was assigned.<sup>11</sup> The vector of control variables  $X_{ij}$  includes the student's own baseline score  $x_{ij}$ . Since students were randomly assigned within schools, our estimate of the coefficient of  $\bar{x}_{-ij}$  in a specification including school fixed effects will reflect the causal effect of peers' prior achievement (both direct through peer to peer learning, and indirect through adjustment in teacher behavior to the extent to which teachers change behavior in response to small random variations in class composition). Although our model has no specific prediction on the impact of the variance, we also include the variance of the peers' test scores, as an independent variable in one specification.

The baseline grades are not comparable across schools (they are the grades assigned by the teachers in each school). However, baseline grades are strongly correlated with

<sup>10</sup> On average across schools, the difference in baseline scores between the two sections is 0.17 standard deviations, with a standard deviation of 0.13. The 25th-75th percentiles interval for the difference is [0.07 - 0.24].

<sup>11</sup> There were very few re-assignments, but we always focus on the initial random assignment: that is, we consider the test scores of the other students *initially assigned* to the class to which a student was *initially assigned* (regardless of whether they eventually attended that class).

endline test scores, which are comparable across schools. Thus, to facilitate comparison with the literature and with the regression discontinuity estimates for the tracking schools, we estimate the impact of average endline peer test scores on a child's test score:

$$(E4) \quad y_{ij} = \kappa \bar{y}_{-ij} + X_{ij}\beta + \nu_j + \epsilon_{ij}$$

This equation is estimated by instrumental variables, using  $\bar{x}_{-ij}$  as an instrument for  $\bar{y}_{-ij}$ .

*c) Measuring the Impact of Assignment to Lower or Upper Section*

Tracking schools provide a natural setup for a regression discontinuity (RD) design to test whether students at the median are better off being assigned to the top section, as would be true in the special case of the model in which teacher payoffs were linear in test scores.

As shown in Figure II, students on either side of the median were assigned to classes with very different average prior achievement of their classmates: the lower-scoring member was assigned to the bottom section, and the higher-scoring member was assigned to the top section. (When the class had an odd number of students, the median student was randomly assigned to one of the sections).

Thus, we first estimate the following reduced form regression in tracking schools:

$$(E5) \quad y_{ij} = \delta B_{ij} + \lambda_1 P_{ij} + \lambda_2 P_{ij}^2 + \lambda_3 P_{ij}^3 + X_{ij}\beta + \epsilon_{ij}$$

where  $P_{ij}$  is the percentile of the child on the baseline distribution in her school.

Since assignment was based on scores within each school, we also run the same specification, including school fixed effects:

$$(E6) \quad y_{ij} = \delta B_{ij} + \lambda_1 P_{ij} + \lambda_2 P_{ij}^2 + \lambda_3 P_{ij}^3 + X_{ij}\beta + \epsilon_{ij} + \nu_j$$

To test the robustness of our estimates to various specifications of the control function, we also run specifications similar to equations (E5) and (E6), estimating the polynomial separately on each side of the discontinuity, and report the difference in test scores across the discontinuity. Finally, we follow Imbens and Lemieux (2007) and use a Fan locally weighted regression of the relationship between endline test scores and baseline percentile on both sides of the discontinuity.

Note that this is an unusually favorable setup for a regression discontinuity design. There are 60 different discontinuities in our data set, rather than just one, as in most regression discontinuity applications, and the number of different discontinuities in

principle grows with the number of schools.<sup>12</sup> We can therefore run a specification including only the pair of students straddling the median.

$$(E7) \quad y_{ij} = \delta B_{ij} + X_{ij}\beta + \epsilon_{ij} + \nu_j$$

Since the median will be at different achievement levels in different schools, results will be robust to sharp non-linearities in the function linking pre- and post-test achievement.

These reduced form results are of independent interest, and they can also be combined with the impact of tracking on average peer test scores for instrumental variable estimation of the impact of average peer achievement for the median child in a tracking environment. Specifically, the first stage of this regression is:

$$\bar{y}_{-ij} = \pi B_{ij} + \phi_1 P_{ij} + \phi_2 P_{ij}^2 + \phi_3 P_{ij}^3 + X_{ij}\beta + \epsilon_{ij} + \nu_j$$

where  $\bar{y}_{-ij}$  is the average endline test scores of the classmates of student  $i$  in school  $j$ . The structural equation:

$$(E8) \quad y_{ij} = \kappa \bar{y}_{-ij} + \lambda_1 P_{ij} + \lambda_2 P_{ij}^2 + \lambda_3 P_{ij}^3 + X_{ij}\beta + \nu_j + \epsilon_{ij}$$

is estimated using  $B_{ij}$  (whether a child was assigned to the bottom track) as an instrument for  $\bar{y}_{-ij}$ .

Note that this strategy will give an estimate of the effect of peer quality for the median child in a tracking environment, where having high achieving peers on average also means that the child is the lowest achieving child of his section (at least at baseline) and having low-achieving peers means that the child is the highest achieving child of his track.

### III. Results

In Section 4.1, we present reduced form estimates of the impact of tracking, showing that tracking increased test scores throughout the distribution and thus rejecting the special case of the model in which higher-achieving peers raise test scores directly but there is no indirect effect through changing teacher behavior. In Section 4.2, we use random variation in peer composition in non-tracked schools to assess the implications of Proposition 3, and to argue that the data is not consistent with the special case of the model in which there are no direct effects of peers. In Section 4.3, we argue that the data are inconsistent with the special case of the model in which teacher incentives are linear in student test scores, because the median student in tracking schools scores similarly

---

<sup>12</sup> Black, Galdo and Smith (2007) also exploit a series of sharp discontinuities in their estimation of a re-employment program across various sites in Kentucky.

whether assigned to the upper or lower section. We conclude that the data is most consistent with a model in which peer composition affects students both directly and indirectly, through teacher behavior, and in which teachers face convex incentives. In this model, teachers teach to the top of the distribution in the absence of tracking, and teaching can improve learning for all children.

#### **A. The Impact of Tracking by Prior Achievement and the Indirect Impact of Peers on Teacher Behavior**

A striking result of this experiment is that tracking by initial achievement significantly increased test scores throughout the distribution.

Table II presents the main results on the impacts of tracking. At the endline test, after 18 months of treatment, students in tracking schools scored 0.139 standard deviations (with a standard error of 0.078 standard deviations) higher than students in non-tracking schools overall (Table II, Column 1, Panel A). The estimated effect is somewhat larger (0.176 standard deviations, with a standard error of 0.077 standard deviations) when controlling for individual-level covariates (column 2). Both sets of students, those assigned to the upper track and those assigned to the lower track, benefited from tracking (in row 2, column 3, panel A, the interaction between being in the bottom half and in a tracking school cannot be distinguished from zero, and the total effect for the bottom half is 0.156 standard deviations, with a p value of 0.04). When we look at each quartile of the initial distribution separately, we find positive point estimates for all quartiles (column 4).

Figure III provides graphical evidence suggesting that all students benefited from tracking. As in Lee (2008), it plots a student's endline test score as a function of the baseline test score using a second-order polynomial estimated separately on either side of the cutoff in both the tracking and non-tracking schools. The fitted values in tracking schools are systematically above those for non-tracking schools, suggesting that tracking increases test scores regardless of the child's initial test score in the distribution of test scores.

Overall, the estimated effect of tracking is relatively large. It is similar in magnitude to the effect of being assigned to a contract teacher (shown in Row 6 of Table II), who, as we will show in Table 6, exerted much higher levels of effort than civil-service teachers. It is also interesting to contrast the effect of tracking with that of a more commonly proposed reform, class size reduction. In other contexts, studies have found a positive and significant effect of class size reduction on test scores (Angrist and Lavy, 1999; Krueger

and Whitmore, 2002). In Duflo, Dupas and Kremer (2010), however, we find that in the same exact context, class size reduction *per se* (without a change in teachers' incentives) generates an increase in test scores of 0.09 standard deviation after 18 months (though insignificant), but the effect completely disappears within one year after the class size reduction stops.

The effect of tracking persisted beyond the duration of the program. When the program ended after 18 months, three quarters of students had then reached grade 3, and in all schools except five, there was only one class for grade 3. The remaining students had repeated and were in grade 2 where, once again, most schools had only one section (since after the end of the program they did not have funds for additional teachers). Thus, after the program ended, students in our sample were not tracked any more (and they were in larger classes than those both tracked and non-tracked students had experienced in grades 1 and 2). Yet, one year later, test scores of students in tracking schools were still 0.163 standard deviations greater (with a standard error of 0.069 standard deviations) than those of students in non-tracking schools overall (Table II, column 1, panel B). The effect is slightly larger (0.178 standard deviations) and more significant with control variables (column 2, panel B), and the gains persist both for initially high and low achieving children. A year after the end of the program, the effect for the bottom half is still large (0.135 standard deviations, with a p-value of 0.09), although the effect for students in the bottom quartile is insignificant (Panel B, column 4).

This overall persistence is striking, since in many evaluations, the test score effects of even successful interventions tend to fade over time (e.g., Banerjee et al., 2007; Andrabi et al., 2008). This indicates that tracking may have helped students master core skills in grades 1 and 2 and that this may have helped them learn more later on.<sup>13</sup>

Under Proposition 1, this evidence of gains throughout the distribution is inconsistent with the special case of the model in which pupils do not affect each other indirectly through teacher behavior but only directly, with all pupils benefiting from higher scoring classmates.

---

<sup>13</sup> We also find (in results not reported here to save space) that initially low-achieving girls in tracking school are 4 percentage points less likely to repeat grade 1. Since the program continued in grade 2, students who repeated lost the advantage of being in a small class, and of being more likely to be taught by a contract teacher. Part of the effect of tracking after the end of grade 1 may be due to this. In the companion paper, we estimate the effect of the class size reduction program in non-tracking schools to be 0.16 standard deviations on average. At most, the repetition effect would therefore explain an increase in  $0.04 \times 0.16 = 0.0064$  standard deviations in test scores. Furthermore, it is present only for girls, while tracking affects both boys and girls.

Table 3 tests for heterogeneity in the effect of tracking. We present the estimated effect of tracking separately for boys and girls in panel A. Although the coefficients are not significantly different from each other, point estimates suggest that the effects are larger for girls in math (panel A). For both boys and girls, initially weaker students benefit as much as initially stronger students.

Panel B presents differential effects for students taught by civil-service teachers and contract teachers. This distinction is important, since the impact of tracking could be affected by teacher response, and contract and civil-service teachers have different experience and incentives.

While tracking increases test scores for students at all levels of the pre-test distribution assigned to be taught by contract teachers (indeed, initially low-scoring students assigned to a contract teachers benefited even more from tracking than initially high-scoring students), initially low-scoring students did not benefit from tracking if assigned to a civil-service teacher. In contrast, tracking substantially increased scores for initially high-scoring students assigned to a civil-service teacher. Below, we will present evidence that this may be because tracking led civil-service teachers to increase effort when they were assigned to the upper track, but not when assigned to the lower track, while contract teachers exert high effort in all situations. This is consistent with the idea that the cost of effort rises very steeply as a certain effort level is approached. Contract teachers are close to this level of effort in any case, and therefore have little scope to increase their effort, while civil service teachers have more such scope.

### **B. Random Variation in Peer Composition and the Direct Effect of Peers**

The local random variation in peer quality in non-tracking schools helps us test whether the opposite special case in which peers affect each other only indirectly, through their impact on teacher behavior, but not directly, can also be rejected.

Recall that Proposition 3 implies that the impact of a uniform increase in peer achievement on students at different level of the distribution depends on whether or not there are direct peer effects. Namely, a uniform increase in peer achievement increases test scores at the top of the distribution in all cases, but effects on students in the middle and at the bottom of the distribution depend on whether there are also direct, positive effects of high achieving peers. In the presence of such effects, the impact on students in the middle of the distribution is ambiguous, while for those at the bottom it is positive,

albeit weaker than the effects at the top of the distribution. In the absence of such direct effects, there is a negative impact on students in the middle of the distribution and no impact at the bottom.

The random allocation of students between the two sections in non-tracking schools generated substantial random variation which allows us to test those implications (see footnote 10).<sup>14</sup> We can thus implement methods to evaluate the impact of class composition similar to those introduced by Hoxby (2000), with the difference that we use actual random variation in peer group composition, but have lower sample size. The results are presented in Table 4. Similar approaches are proposed by Boozer et al. (2001) in the context of the STAR experiment and Lyle (2007) for West Point Cadets, who are randomly assigned to a group of peers.

On average students benefit from stronger peers: the coefficient on the average baseline test score is 0.35 with a standard error of 0.15 (Table 4 panel A, column 1). This coefficient is not comparable with other estimates in the literature since we are using the school grade sheets, which are not comparable across schools, and so we are standardizing the baseline scores in each school. Thus, in panel B, we use the average baseline scores of peers to instrument for their average endline score (the first stage is presented in panel C). If effects were linear, column 1 would imply that a one standard deviation increase in average peer endline test score would increase the test score of a student by 0.445 standard deviations, an effect comparable to those found in previous work, with the exception of Lyle (2007), which finds insignificant peer effects with a similar strategy.<sup>15</sup>

More interestingly, as shown in columns 4 to 6, the data are consistent with Proposition 3 in the presence of direct peer effects – the estimated effect is 0.9 standard deviations in the top quartile; insignificant and negative in the middle two quartiles, and

---

<sup>14</sup> We used only the initial assignment (which was random) in all specifications, not the section the student eventually attended.

<sup>15</sup> Of course, these estimates come from variations in peer test scores that are smaller than one standard deviation and, the extrapolation to one standard deviation may not actually be legitimate: the linear approximation is valid only locally. However, presenting the results in terms of the impact of a one standard deviation change in peers' test scores allows us to compare our results to that of the literature, which also uses local variation in average test scores, and generally expresses the results in terms of the impact of a one standard deviation increase in average test scores. Note that even with this normalization, the results are not quite comparable to those of papers which estimate the effect of a standard deviation in average baseline test scores on endline test scores: those results would be scaled down, relative to the ones we present here, by the size of the relationship between baseline and endline scores.

0.5 standard deviations in the bottom quartile. The data thus suggest that peers affect each other both directly and indirectly.<sup>16</sup>

### **C. Are Teacher Incentives Linear? The Impact of Assignment to Lower vs. Upper Section: Regression Discontinuity Estimates for Students near the Median**

Recall from proposition 7 that under a linear payoff schedule for teachers, the median student will be equidistant from the target teaching level in the upper and lower sections, but will have higher-achieving peers and therefore perform better in the upper section. Under a concave payoff schedule, teacher effort will be greater in the lower section but the median student will be better matched to the target teaching level in the upper section, potentially creating offsetting effects. Finally, if teacher payoffs are convex in student test scores, the median student will be closer to the target teaching level in the lower section but on the other hand will have lower-achieving peers and experience lower teacher effort. These effects go in opposite directions, so that the resulting impact of the section in which the median child is assigned is ambiguous. In this section, we present regression discontinuity estimates of the impact of assignment to the lower or upper section for students near the median in tracking schools. We argue that the test score data are inconsistent with linear payoffs but consistent with the possibility that teachers face a convex payoff function and focus on students at the top of the distribution. (Later, we rule out the concave case.)

The main thrust of the regression discontinuity estimates of peer effects are shown in Figure III, discussed above. As is apparent from the figure, there is no discontinuity in test scores at the 50<sup>th</sup> percentile cutoff in the tracking schools, despite the strong discontinuity in peer baseline scores observed in Figure II (a difference of 1.6 standard deviations in the baseline scores). The relationship is continuous and smooth throughout the distribution.<sup>17</sup>

---

<sup>16</sup> Controlling for the standard deviation of the test scores (column 2) does not change the estimated effect of the mean, and we cannot reject the hypothesis that the standard deviation of scores itself has no effect, though the standard errors are large.

<sup>17</sup> This result is robust to a series of specifications. When we use a linear fit, rather than a polynomial, we again do not see an effect of the section in which the students were placed for students in the middle of the distribution (figure not shown). In Appendix Figure A1, we reproduce Figure III (for tracking schools) with a quadratic fit for total score in Panel A and also find no discontinuity. In Panel B, we use a Fan locally-weighted regression with a biweight kernel and a bandwidth of 2.0, and we again see no discontinuity at the threshold for being assigned to the bottom track.



A variety of regression specifications show no significant effect of students near the median of the distribution being assigned to the bottom half of the class in tracking schools (Table 5, panel A). Columns 1 and 2 present estimates of equations (E5) and (E6), respectively: the endline test score is regressed on a cubic of original percentile of a child in the distribution in his school, and a dummy for whether he is in the bottom half of the class. Column 6 presents estimates of equation (E7), and column 7 adds a school fixed effect. To assess the robustness of these results, columns 3 through 5 specify the control function in the regression discontinuity design estimates in two other ways: column 5 follows Imbens and Lemieux (2007) and shows a Fan locally weighted regression on each side of the discontinuity.<sup>18</sup> The specifications in columns 3 and 4 are similar to equations (E5) and (E6), but the cubic is replaced by a quadratic allowed to be different on both sides of the discontinuity. The results confirm what the graphs show: despite the big gap in average peer achievement, the marginal students' final test scores do not seem to be significantly affected by assignment to the bottom section.

Panel B shows instrumental variable estimates of the impact of classmates' average test score. We use the average endline score of classmates (because the baseline scores are school specific), and instrument it using the dummy for being in the "bottom half" of the initial distribution. The first stage is shown in panel C, and shows that the average endline test scores of a child's classmates are about 0.76 standard deviations lower if she was assigned to the bottom section in a tracking school. The IV estimates in panel B are all small and insignificant. For example the specification in column 2, which has school fixed effects and uses all the data, suggests that an increase in one standard deviation in the classmates' average test score *reduces* a child's test score by 0.002 standard deviations, a point estimate extremely close to zero. The 95 percent confidence interval in this specification is [-0.21; 0.21], which excludes large effects.<sup>19</sup>

Overall, these regression discontinuity results allow us to reject the third special case, in which teacher have linear incentives and consequently target the median child in the distribution of the class.

Taken together, the test scores results are consistent with a model in which students influence each other both directly and indirectly through teacher behavior, and teachers

---

<sup>18</sup> Since the result is completely insensitive to the choice of bandwidth, we do not implement the cross-validation strategy they recommend.

<sup>19</sup> With the caveat, mentioned above, that there may be a direct impact of one's rank in the class, which would violate the identification assumption that the only channel of impact of being assigned to the lower section is through classmates' average score.

face convex payoffs in pupils' test scores, and thus tend to target their teaching to the top of the class. This model can help us interpret our main finding that tracking benefits all students: for higher-achieving students, tracking implies stronger peers and higher teacher effort, while for lower-achieving students, tracking implies a level of instruction that better matches their needs.

Nevertheless, the result that the median student benefits just as much from tracking if assigned to the top or the bottom track of the classroom is striking. Under convexity of the teacher payoff function, it suggests that the gain experienced by the median student assigned to the lower track in terms of level of instruction compensates exactly the loss (relative to the median student assigned to the upper track) in terms of teacher effort and direct effect of peers. This is a somewhat surprising coincidence. Furthermore, we have not yet rejected the possibility that teacher payoffs are concave in student test scores. Recall that under concavity, students in the bottom half of the distribution may gain from greater teacher effort under tracking (proposition 6). Fortunately, convexity and concavity have different implications for how the impact of being assigned to the top or the bottom track should differ, depending on whether the median student is assigned to the civil-service teacher or the regular teacher (proposition 8), which gives us a sharper prediction to test. Our model predicts a greater response of teacher effort to tracking among civil-teachers than among contract teacher (we will test this directly below). Under convexity, this implies that the median student should benefit more from being assigned to the top section (rather than the bottom section) with a civil-service teacher than with a contract teacher. Appendix FigureA2 shows the plot of the regression discontinuity estimated separately for contract and for civil service teachers.<sup>20</sup> The pattern supports the prediction of the convex case. For students assigned to contract teachers, we see no discontinuity at the median in the difference between tracking and non-tracking schools. For students assigned to civil-service teachers, we see a graphical illustration of the result above: there is no effect of tracking for children at the bottom, but, there is a jump at the median in the effect of tracking (the difference between the two lines). The point estimate of the difference in the limit from above and from below of the tracking effect is 0.11 standard deviations (although it is not significant).

---

<sup>20</sup> Note that the data is from different schools on the left and on the right of the median in each of these plots, since in a given school, the contract teacher is assigned one class, and the civil teacher is assigned the other one.

Additional functional form assumptions would allow us to make more predictions on how the shape of the relationship between baseline quantile and endline achievement varies with tracking status and the shape of teachers' payoffs. Assume for example that there is a linear relationship between own baseline quantile and endline test score, that the effect of peers is also linear, and that the effect of teacher instruction is as described above. Then, if the teacher teaches to the top, the gains to tracking should be higher at the top of both tracks than at the bottom: the relationship between baseline quantile and endline test scores should be convex within each track. In Figure III, we observe this pattern in the upper track, but not in the lower track. Second, the relationship between baseline quantile and endline test score in non-tracking schools should be linear at the bottom of the distribution, and steeper at the top (since the top students are closer to the instruction level), which is consistent with what we see in Figure III.<sup>21</sup>

The next section examines data on teacher behavior, arguing that it is also inconsistent with the hypothesis that teacher payoffs are concave in student test scores, but consistent with the hypothesis that payoffs are convex in student scores.

#### **IV. Teacher Response to Tracking**

This section reports on tests of implications on the model related to teacher behavior. Subsection A argues that the evidence on teacher behavior is consistent with the idea that teachers face convex payoffs incentives in pupil test scores and inconsistent with the hypothesis of concavity. Subsection B presents some evidence that the patterns of changes in test scores are consistent with the hypothesis that teachers change their focus teaching level  $x^*$ , in response to tracking.

##### **A. Teacher Effort and the Curvature of the Teacher Payoff Function**

Estimates of the impact of tracking on teacher's effort are presented in Table 6. Our measure of teacher effort is whether the teacher was present in school during unannounced visits, and whether she was found in class and teaching.

Recall that the model does not yield a clear prediction for whether tracking should increase or decrease teacher effort overall. However, the model predicts that the effort

---

<sup>21</sup> In future work, it would be interesting to take this line of argument further, and estimate a parametric version the model, using both cross-sectional variation and the variation generated by the experiment. The model would likely be over-identified, which would allow it to be formally tested.

level might vary across tracks (upper or lower). Namely, proposition 6 implies that if teacher payoffs are convex in student test scores, then teachers assigned to the top section in tracking schools should exert more effort than those assigned to the bottom section. On the other hand, if payoffs are concave in student test scores, teachers should put in more effort in the lower section than the upper section.

We find that teachers in tracking schools are significantly more likely both to be in school and to be in class teaching than those in non-tracking schools (Table 6, columns 1 and 2).<sup>22</sup> Overall, teachers in tracking schools are 9.6 percentage points (19 percent) more likely to be found in school and teaching during a random spot check than their counterparts in non-tracking schools. However, the negative coefficient on the interaction term between “tracking” and “bottom half” shows that teacher effort in tracking schools is higher in the upper section than the lower sections, consistent with the hypothesis that teacher payoffs are convex in student test scores.

Recall that the model also suggests that if teachers face strong enough incentives (high enough  $\lambda$ ) then the impact of tracking on their effort will be smaller because they have less scope to increase effort. To test this, we explore the impact of tracking on teacher effort separately for civil-service teachers and new contract teachers, who face very different incentives. Contract teachers are on short-term (one year) contracts, and have incentives to work hard to increase their chances both of having their short-term contracts renewed, and of eventually being hired as civil-service teachers. In contrast, the civil service teachers have high job security and promotion depends only weakly on performance. Civil service teachers thus may have more scope to increase effort.

We find that the contract teachers attend more than the civil-service teachers, are more likely to be found in class and teaching (74 percent versus 45 percent for the civil-service teacher), and their absence rate is unaffected by tracking. In contrast, the civil-service teachers are 5.4 percentage points more likely to be in school in tracking schools than in non-tracking schools when they were assigned to the top section, and the difference is significant (recall that teacher assignment to each section was random, so this is indeed the causal effect of being assigned to a group of strong students, rather than a non-tracked group). However, the difference disappears entirely for civil-service teachers assigned to the bottom section: the interaction between tracking and bottom

---

<sup>22</sup> The specification is similar to equation (E2), though the set of control variables includes teacher age and experience teaching.

section is minus 7.3 percentage points, and is also significant. The effect is even stronger for finding teachers in their classrooms: overall, these civil-service teachers are 11 percentage points more likely to be in class and teaching when they are assigned to the top section in tracking schools than when they are assigned to non-tracking schools. This represents a 25 percent increase in teaching time. When civil-service teachers are assigned to the bottom section, they are about as likely to be teaching as their counterparts in non-tracking schools.<sup>23</sup> Students' attendance is not affected by tracking or by the section they were assigned to (column 7).

These results on teacher effort also shed light on the differential impact of tracking across students observed in Table 3. Recall that among students who were assigned to civil service teachers, tracking created a larger test score increase in the top section than in the bottom section, but this was not the case for students of contract teachers. The effort data suggests that, for students of civil service teachers, the tracking effect is larger for the upper stream because they benefit not only from (potentially) more appropriate teaching and better peers, but also from higher effort. For students of contract teachers, the “higher effort” margin is absent.

### **B. Adjustment in the level of teaching and effects on different skills**

The model suggests teachers may adjust the level at which they teach in response to changes in class composition. For example, a teacher assigned to students with low initial achievement might begin with more basic material and instruct at a slower pace, providing more repetition and reinforcement. With a group of initially higher achieving students, the teacher can increase the complexity of the tasks and pupils can learn at a faster pace. Teachers with a heterogeneous class may teach at a relatively high level that is inappropriate for most students, especially those at the bottom.

While we unfortunately do not have direct evidence on the material teachers covered, Table 7 reports specifications similar to equation (E2), but with test scores disaggregated by specific skill for math and language. The differential impact of tracking on strong and

---

<sup>23</sup> Note that these results on the efforts of civil-service teachers are obtained in an environment where there is also a high-effort teacher present. In our companion paper (Duflo, Dupas, Kremer, 2010) we find that civil-service teachers in both tracking and non-tracking schools reduced their effort relative to schools which did not receive any extra-teacher. Being assigned to the upper track only mitigated this effect, but did not improve teacher's effort beyond the effort level observed in the absence of any contract teacher program. As such, our results may not generalize to a context where tracking is achieved by hiring extra civil-service teachers.

weak students' mastery of easy and hard material is consistent with the hypothesis that teachers adjusted their teaching to fit their classroom's composition. The equations are estimated jointly in a simultaneous equation framework (allowing for correlation between the error terms). There is no clear pattern for language, but the estimates for math suggest that, while the total effect of tracking on children initially in the bottom half of the distribution (thus assigned to the bottom section in the tracking schools) is significantly positive for all levels of difficulty, these children gained from tracking more than other students on the easiest questions and less on the more difficult questions. The interaction "tracking times bottom half" is positive for the easiest skills, and negative for the hardest skills. A chi-square test allows us to reject equality of the coefficients of the interaction in the "easy skills" regression and the "difficult skills" regression at the 5 percent level. Conversely, students assigned to the upper section benefited less on the easiest questions, and more on the difficult questions (in fact, they did not significantly benefit from tracking for the easiest questions, but they did significantly benefit from it for the hardest questions).

Overall, this table provides suggestive evidence that tracking allowed teachers the opportunity to focus on the skills that children had not yet mastered, although the estimates are not very precise.<sup>24</sup> An alternative explanation for these results, however, is that weak students stood to gain from any program on the easiest skills (since they had not mastered them yet, and in 18 months they did not have time to master both easy and strong skills), while strong students had already mastered them and would have benefited from any program at the skills they had not already mastered. The ordinal nature of test score data makes regression interaction terms difficult to interpret conclusively, which further weakens the evidence.

## **V. Conclusion**

This paper provides experimental evidence that students at all level of the initial achievement spectrum benefited from being tracked into classes by initial achievement.

---

<sup>24</sup> We estimated a version of equation (E2) allowing the effect to vary by quarter of the distribution for each skill, and the patterns are very similar, with progressively weaker students benefiting the most from tracking for the easiest skills, and progressively stronger students benefiting the most for the hardest skills. We also estimated a version of equation (E2) separately by teacher type. We find that the effects observed in Table 7 are much stronger for students assigned to contract teachers than for those assigned to civil-service teachers. This is because lower section students assigned to the civil-service teachers did not benefit from tracking, as seen in Table 3.

Despite the critical importance of this issue for the educational policy both in developed and developing countries, there is surprisingly little rigorous evidence addressing it, and to our knowledge this paper provides the first experimental evaluation of the impact of tracking in any context, and the only rigorous evidence in a developing country context.

After 18 months, the point estimates suggest that the average score of a student in a tracking school is 0.14 standard deviations higher than that of a student in a non-tracking school. These effects are persistent. One year after the program ended, students in tracking schools performed 0.16 standard deviations higher than those in non-tracking schools.

Moreover, tracking raised scores for students throughout the initial distribution of student achievement. A regression discontinuity design approach reveals that students who were very close to the 50<sup>th</sup> percentile of the initial distribution within their school scored similarly on the endline exam whether they were assigned to the top or bottom section. In each case, they did much better than their counterparts in non-tracked schools.

We also find that students in non-tracking schools scored higher if they were randomly assigned to peers with higher initial scores. This effect was very strong for students at the top of the distribution, absent for students in the middle of the distribution and positive but not as strong at the bottom of the distribution. Together, these results suggest that peers affect students both directly and indirectly by influencing teacher behavior, in particular teacher effort and choice of target teaching level. Under the model, the impact of tracking will depend on teachers' incentives, but in a context in which teachers have convex payoffs in student test scores, tracking can lead them to refocus attention closer to the median student.

These conclusions echo those reached by Geoffrey Borman and Gina Hewes (2002), who find positive short- and long-term impacts of "Success for All." One of the components of this program, first piloted in the United States by elementary schools in Baltimore, Maryland, is to regroup students across grades for reading lessons targeted to specific performance levels for a few hours a day. Likewise, Abhijit Banerjee et al. (2007), who study a remedial education and a computer-assisted learning program in India, found that both programs were very effective, mainly because they allowed students to learn at their own levels of achievement. Finally, our results match those of Zimmer (2003), who finds that, in the US, tracking has overall a positive effect on lower-achieving students, for whom the benefit of having more tailored instruction under

tracking offsets the reduction in peer quality. On the other hand, Tuomas Pekkarinen, Roope Uusitalo, and Sari Kerr (2009) find positive effects of ending school tracking in Finland on the performance of students from lower ability background.

A central challenge of educational systems in developing countries is that students are extremely diverse, and the curriculum is largely not adapted to new learners. These results show that grouping students by preparedness or prior achievement and focusing the teaching material at a level pertinent for them could potentially have large positive effects with little or no additional resource cost.

Our results may have implications for debates over school choice and voucher systems. A central criticism of such programs is that they may wind up hurting some students if they lead to increased sorting of students by initial academic achievement and if all students benefit from having peers with higher initial achievement. Furthermore, tracking in public school would affect the equilibrium under these programs. Epple, Newton and Romano (2002) study theoretically how tracking in public schools would affect the decision of private schools to track students, and the welfare of high and low achieving students. They find that, if the only effect of tracking was through the direct effects of the peer group, tracking in public schools would increase enrolment and raise average achievement in public schools, but that high achieving students would benefit at the expense of low achieving students. Our results suggest that, at least in some circumstances, tracking can potentially benefit all students, which would have implication for the school choice equilibrium in contexts with school choices.

Note that some aspects of our set-up are specific to the experimental nature of the work, and would be different in a scaled-up version. The effects may be muted in this setting because the experiment was known to be relatively short-lived, and teachers may not have fully adjusted their lesson plans. On the other hand, since teachers were randomly assigned to each section and class size was also constant, resources were similar for non-tracked classes and the lower and upper-sections under tracking. However, in other contexts, policy makers or school officials could target more resources to either the weaker or stronger students. Thomas Piketty (2004) notes that tracking could allow more resources to be devoted to weaker students, promoting catch up of weaker students. Compensatory policies of this type are not unusual in developed countries, but in some developed countries and almost all developing countries, more resources are devoted to stronger students, consistent with the assumption of convex payoffs to test



scores in the theoretical framework above. Indeed, even in developed countries, the best teachers are often assigned to the stronger students.

If the best teachers are assigned to the highest achieving students, the initially lower achieving students could be hurt by tracking, so caution is needed in generalizing from these results in which teacher ability was held constant between tracking and non-tracking schools.<sup>25</sup> Of course tendencies for strong teachers to seek high-achieving, students could perhaps be mitigated if evaluations of a teacher's performance were on a value-added basis, rather than based on endline scores.

It is an open question whether similar results would be obtained in different contexts. The model provides some evidence on features of the context that are likely to affect the impact of tracking: initial heterogeneity, high scope to increase teacher effort (at least through increase presence) and the relative incentives teachers face to teach low- and high-achieving students. For example, in a system where the incentive is to focus on the weakest students, and there is not much scope to adjust teacher effort, tracking could have very strong positive effect on high achievement students, and weak or even negative effect on weak students, who would lose strong peers without the benefit of getting more appropriately focused instruction. Going beyond the model, it seems reasonable to think that the impact of tracking might also depend on availability of extra resources to help teachers deal with different types of students (such as remedial education, teacher aides, lower pupil to teacher ratio, computer-assisted learning, and special education programs). We believe that tracking might be reasonably likely to have a similar impact in other low income countries in sub-Saharan Africa and South Asia, where the student population is often heterogeneous, and the educational system rewards teachers for progress at the top of the distribution. Our reduced form results may not apply to the US or other developed countries where teachers' incentives may differ, student and teacher effort levels are typically higher, and the distribution of student ability at baseline may be much narrower. However, we hope that our analysis may still provide useful insights to predict the situations in which tracking may or may not be beneficial in these countries, and on the type of experiments that would shed light on this question.

---

<sup>25</sup> Note, however, that in our setting it seems likely that if choice had been allowed, the more powerful teachers would have been assigned to the stronger group, and since the more powerful teachers the civil-service teachers, who also happen to be the worst teachers, this would have benefited the weak students.

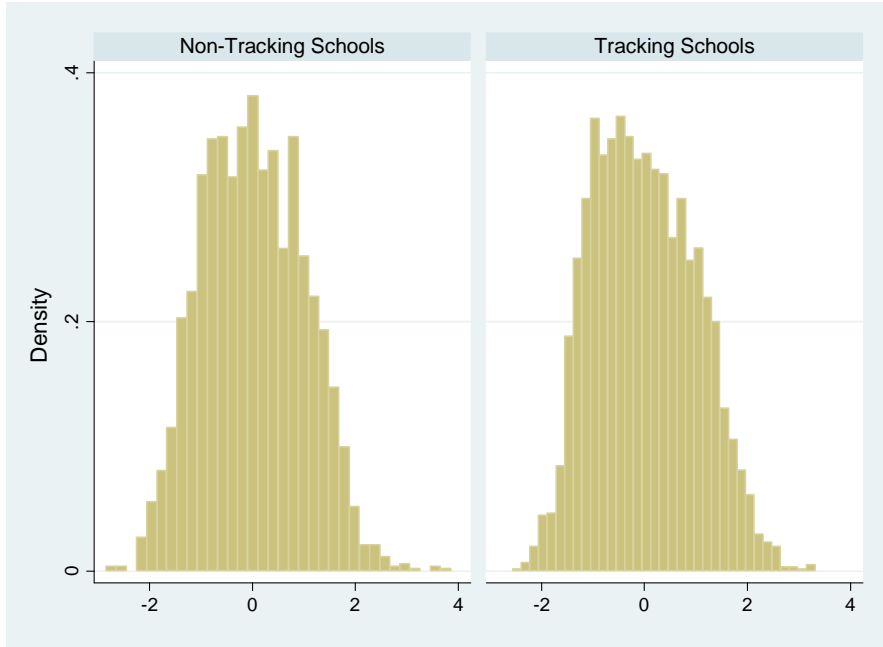
## References

- Andrabi, Tahir, Jishnu Das, Asim Khwaja, and Tristan Zajonc.** 2008. Do Value-Added Estimates Add Value ? Accounting for Learning Dynamics. Mimeo, Harvard University.
- Angrist, Joshua and Victor Lavy.** 1999. "Using Maimonides' Rule to Estimate the Effect of Class Size on Scholastic Achievement." *Quarterly Journal of Economics* 114: 533-575.
- Angrist, Joshua, and Kevin Lang.** 2004. "Does School Integration Generate Peer Effects? Evidence from Boston's Metco Program," *American Economic Review*, vol. 94(5): 1613-1634
- Black, Dan A., Jose Galdo, and Jeffrey A. Smith.** 2007. "Evaluating the Worker Profiling and Reemployment Services System Using a Regression Discontinuity Approach." *American Economic Review*, 97(2):104-107.
- Banerjee, Abhijit, Shawn Cole, Esther Duflo, and Leigh Linden.** 2007. "Remedying Education: Evidence from Two Randomized Experiments in India." *Quarterly Journal of Economics*, 122(3):1235-1264.
- Borman, Geoffrey D. and Gina M. Hewes.** 2002. "The Long-Term Effects and Cost-Effectiveness of Success for All." *Educational Evaluation and Policy Analysis*, Winter, 24(4): 243-266.
- Betts, Julian R. and Jamie L. Shkolnik.** 1999. "Key Difficulties in Identifying the Effects of Ability Grouping on Student Achievement." *Economics of Education Review*, February, 19(1): 21-26.
- Boozer, Michael, and Stephen Cacciola.** 2001. "Inside the 'Black Box' of Project Star: Estimation of Peer Effects Using Experimental Data" Yale Economic Growth Center Discussion Paper No. 832.
- Clark, Damon.** 2010. "Selective Schools and Academic Achievement." *The B.E. Journal of Economic Analysis & Policy*, Vol. 10, Iss. 1 (Advances), Article 9.
- Duflo, Esther, Pascaline Dupas, and Michael Kremer.** 2010. "Pupil-Teacher Ratio, Teacher Management and Education Quality: Experimental Evidence from Kenyan Primary Schools". Mimeo, MIT.
- Epple, Dennis, Elisabeth Newlon and Richard Romano.** 2002. "Ability tracking, school competition, and the distribution of educational benefits," *Journal of Public Economics* 83:1-48.

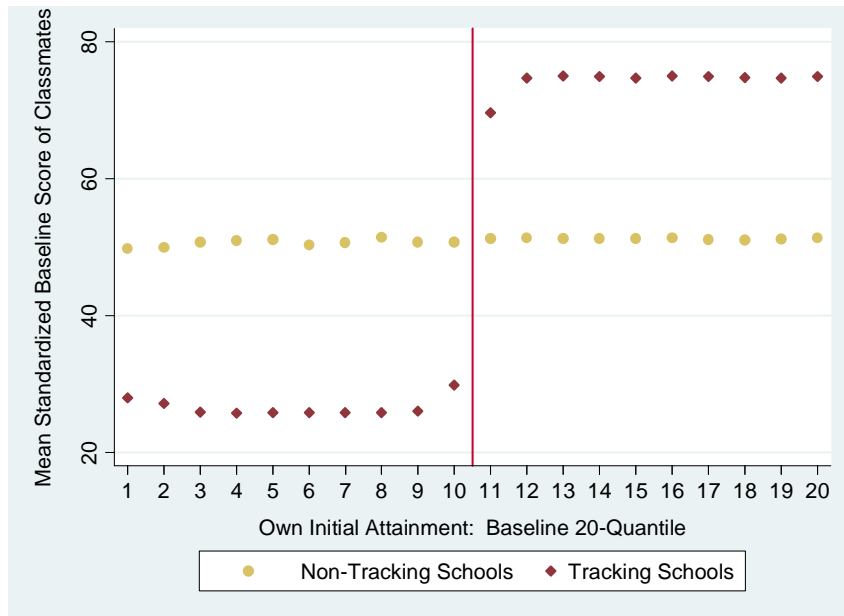
- Epple, Dennis, and Ricard Romano.** Forthcoming. "Peer Effects in Education: A Survey of the Theory and Evidence", *Handbook of Social Sciences*.
- Figlio, David and Marianne Page.** 2002. "School Choice and the Distributional Effects of Ability Tracking: Does Separation Increase Inequality?" *Journal of Urban Economics* 51: 497-514.
- Glewwe, Paul W., Michael Kremer, and Sylvie Moulin.** 2009. "Many Children Left Behind? Textbooks and Test Scores in Kenya." *American Economic Journal: Applied Economics*, 1 (1):112-35.
- Hoxby, Caroline.** 2000. "Peer Effects in the Classroom: Learning from Gender and Race Variation." National Bureau of Economic Research (Cambridge, MA) Working Paper No. 7867.
- Hoxby, Caroline and Gretchen Weingarth.** 2006. "Taking Race Out of the Equation: School Reassignment and the Structure of Peer Effects." Unpublished manuscript, Harvard University.
- Imbens, Guido and Thomas Lemieux.** 2008. "Regression Discontinuity Designs: A Guide to Practice." *Journal of Econometrics*, 142(2), pp. 615-635.
- Krueger, Alan and Diane Whitmore.** 2002. "Would Smaller Classes Help Close the Black-White Achievement Gap?" In John E. Chubb and Tom Loveless, eds., *Bridging the Achievement Gap*. Washington: Brookings Institution Press.
- Lavy, Victor, Daniel Paserman and Analia Schlosser.** 2008. "Inside the Black Box of Ability Peer Effect: Evidence from Variation of Low Achiever in the Classroom" NBER working paper No 14415.
- Lee, David S.** 2008. "Randomized experiments from non-random selection in U.S. House elections". *Journal of Econometrics*, 142(2): 675-697.
- Lefgren, Lars.** 2004. "Educational peer effects and the Chicago public schools," *Journal of Urban Economics* 56: 169-191.
- Lyle, David S.** 2007. "Estimating and Interpreting Peer and Role Model Effects from Randomly Assigned Social Groups at West Point." *Review of Economics and Statistics*, May, 89(2): 289-299.
- Manning, Allen and Jörn-Steffen Pischke.** 2006. "Comprehensive Versus Selective Schooling in England & Wales: What Do We Know?" NBER Working Paper 12176.

- Tuomas Pekkarinen, Roope Uusitalo and Sari Kerr.** (2009). "School Tracking and Development of Cognitive Skills," IZA Discussion Papers 4058, Institute for the Study of Labor (IZA).
- Piketty, Thomas.** 2004. "L'Impact de la taille des classes et de la ségrégation sociale sur la réussite scolaire dans les écoles françaises : une estimation à partir du panel primaire 1997." Unpublished manuscript, PSE, France.
- Zimmer, Ron.** 2003. "A New Twist in the Educational Tracking Debate," *Economics of Education Review* 22: 307-315.
- Zimmerman, David J.** 2003. "Peer Effects in Academic Outcomes: Evidence from a Natural Experiment." *The Review of Economics and Statistics*, 85(1): 9-23.

**FIGURE I: DISTRIBUTION OF INITIAL TEST SCORES (ALL SCHOOLS)**

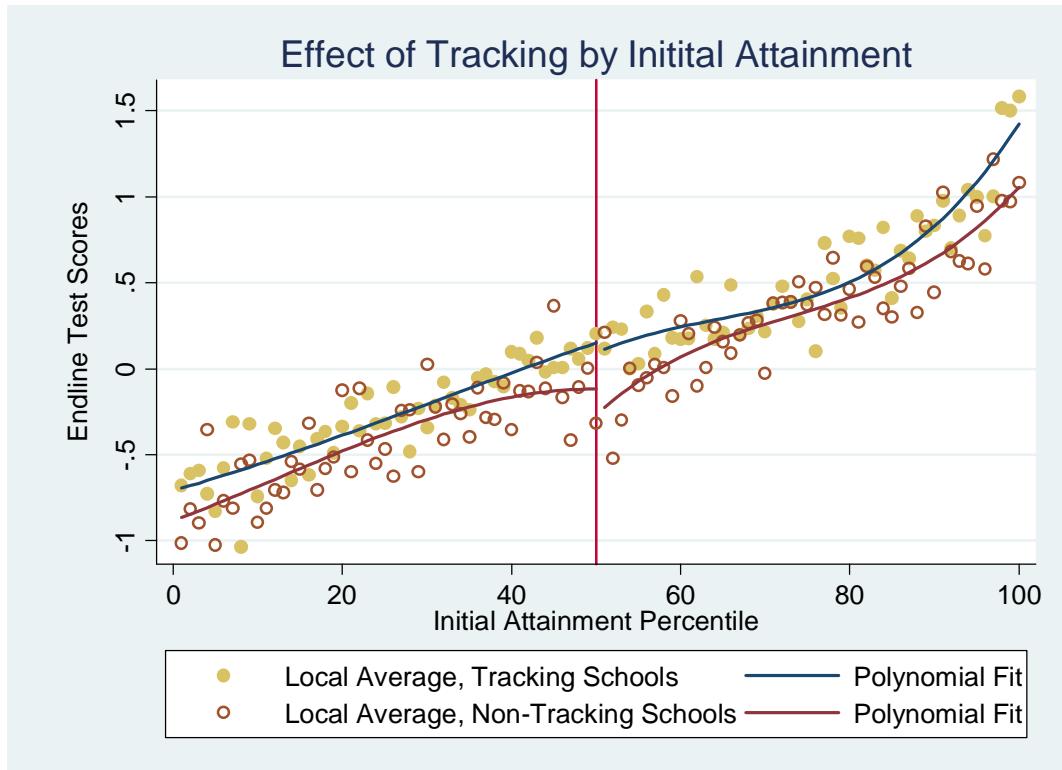


**FIGURE II: EXPERIMENTAL VARIATION IN PEER COMPOSITION**



*Note: Each dot corresponds to the average peer quality across all students in a given 20-quantile, for a given treatment group.*

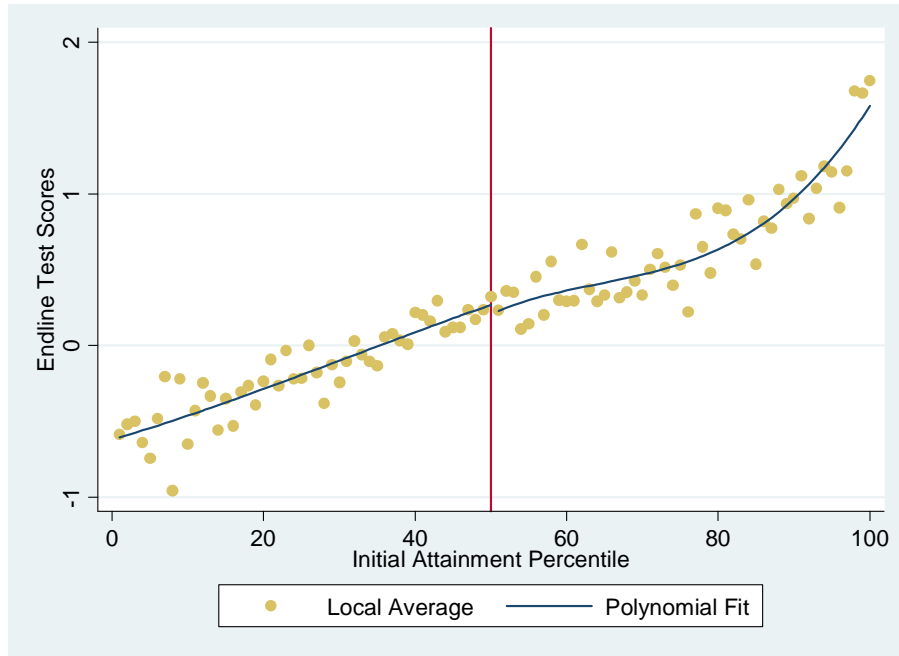
**FIGURE III: LOCAL POLYNOMIAL FITS OF ENDLINE SCORE BY INITIAL ATTAINMENT**



*Notes: Dots represent local averages. The fitted values are from regressions that include a second order polynomial estimated separately on each side of the percentile=50 threshold.*

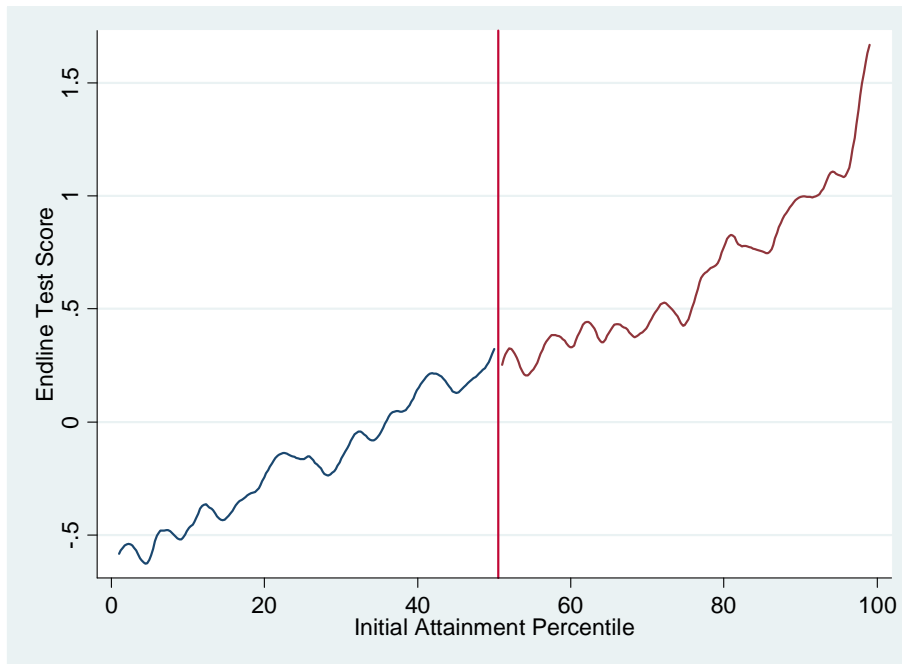
**FIGURE A1: PEER QUALITY AND ENDLINE SCORES IN TRACKING SCHOOLS**

Panel A. Quadratic Fit



Notes: The dots are the average score. The fitted values are from regressions that include a second order polynomial estimated separately on each side of the percentile=50 threshold.

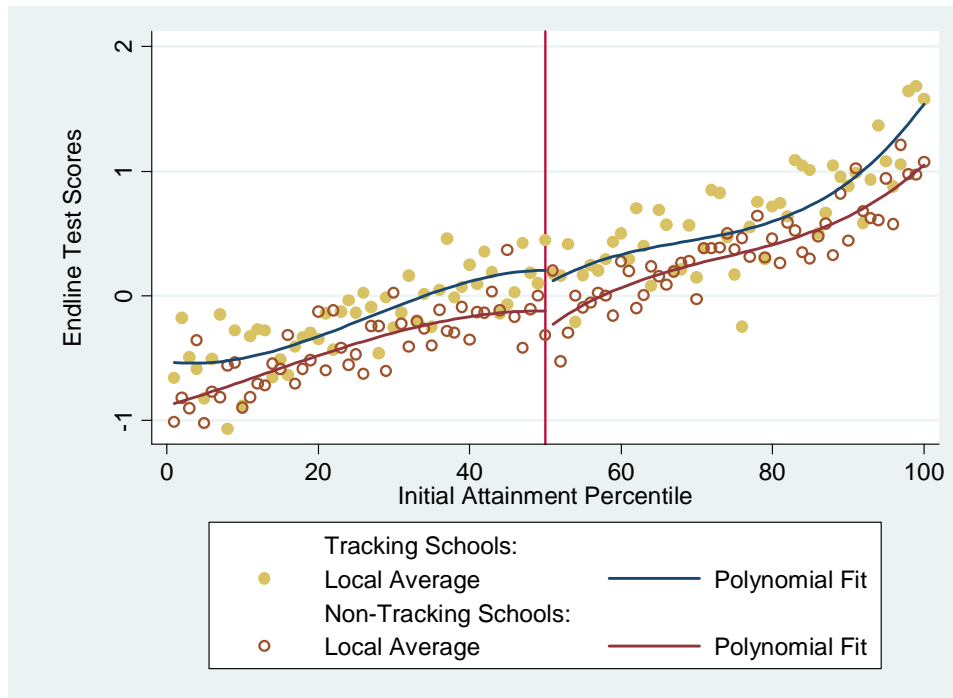
Panel B. Fan Locally-Weighted regression



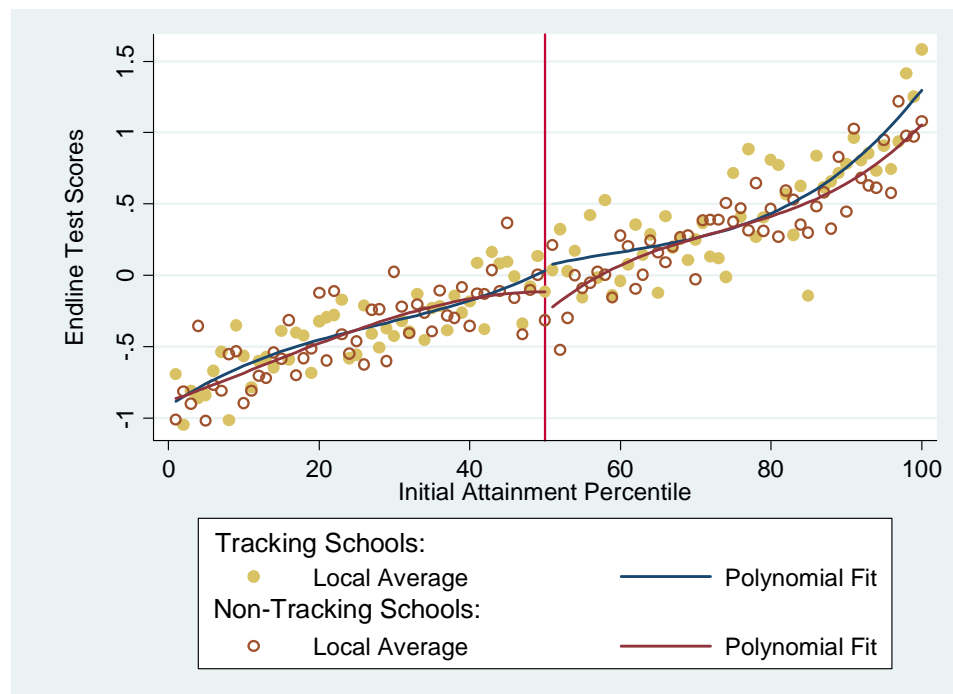
Notes: Fitted values from Fan's locally weighted regressions with quartic (biweight) kernels and a bandwidth of 2.0.

**FIGURE A2: DIFFERENTIAL EFFECTS FOR MEDIAN STUDENT, BY TEACHER TYPE**

PANEL A. STUDENTS ASSIGNED TO CONTRACT TEACHERS



PANEL B. STUDENTS ASSIGNED TO CIVIL-SERVICE TEACHERS



*Notes: The data is from different schools on the left and on the right of the median in each of these plots, since in a given school, the contract teacher is assigned one class, and the civil teacher is assigned the other one.*



**Table I**  
**School and Class Characteristics, by Treatment Group, Pre- and Post-Program Start**

	All ETP Schools				
	Non-Tracking Schools		Tracking Schools		<i>P</i> -value Tracking = Non-Tracking
	Mean	SD	Mean	SD	
<i>Panel A. Baseline School Characteristics</i>					
Total enrollment in 2004	589	232	549	198	0.316
Number of government teachers in 2004	11.6	3.3	11.9	2.8	0.622
School pupil/teacher ratio	37.1	12.2	35.9	10.1	0.557
Performance at national exam in 2004 (out of 400)	255.6	23.6	258.1	23.4	0.569
<i>Panel B. Class Size Prior to Program Inception (March 2005)</i>					
Average class size in first grade	91	37	89	33	0.764
Proportion of female first grade students	0.49	0.06	0.49	0.05	0.539
Average class size in second grade	96	41	91	35	0.402
<i>Panel C. Class Size 6 Months After Program Inception (October 2005)</i>					
Average class size in first grade	44	18	42	15	0.503
Range of class sizes in sample (first grade)	19-98		20-97		
<i>Panel D. Class Size in Year 2 of Program (March 2006)</i>					
Average class size in second grade	42	17	42	20	0.866
Range of class sizes in sample (second grade)	18-93		21-95		
Number of Schools	61		60		121
Within Tracking Schools					
	Assigned to Bottom Section		Assigned to Top Section		<i>P</i> -value Top = Bottom
	Mean	SD	Mean	SD	
<i>Panel E. Comparability of two sections within Tracking Schools</i>					
Proportion Female	0.49	0.09	0.50	0.08	0.38
Average Age at Endline	9.04	0.59	9.41	0.60	0.00
Average Standardized Baseline Score (Mean 0, SD 1 at school level)	-0.81	0.04	0.81	0.04	0.00
Average Std. Dev. Within Section in Standardized Baseline Scores	0.49	0.13	0.65	0.13	0.00
Average Standardized Endline Score (Mean 0, SD 1 in Non-Tracking group)	-0.15	0.44	0.69	0.58	0.00
Average Std. Dev. Within Section in Standardized Endline Scores	0.77	0.23	0.88	0.20	0.00
Assigned to Contract teacher	0.53	0.49	0.46	0.47	0.44
Respected Assignment	0.99	0.02	0.99	0.02	0.67
Within Non-Tracking Schools					
	Section A (Assigned to Civil- Service Teacher)		Section B (Assigned to Contract Teacher)		<i>P</i> -value A = B
	Mean	SD	Mean	SD	
<i>Panel F. Comparability of two sections within Non-Tracking Schools</i>					
Proportion Female	0.49	0.06	0.49	0.06	0.89
Average Age at Endline	9.07	0.53	9.00	0.45	0.45
Average Standardized Baseline Score (Mean 0, SD 1 at school level)	0.003	0.10	0.002	0.11	0.94
Average Std. Dev. Within Section in Standardized Baseline Scores	1.005	0.08	0.993	0.08	0.43
Average Standardized Endline Score (Mean 0, SD 1 in Non-Tracking group)	0.188	0.46	0.047	0.48	0.10
Average Std. Dev. Within Section in Standardized Endline Scores	0.937	0.24	0.877	0.24	0.16

Notes: School averages. *P*-values are for tests of equality of the means across groups.

**Table II: Overall Effect of Tracking**

	(1)	(2)	(3)	(4)	(5)	(6)	(7)	(8)	(9)	(10)
	Total Score				Mathematics Score			Literacy Score		
<b>Panel A: Short-Run Effects (after 18 months in program)</b>										
(1) Tracking School	0.139 (0.078)*	0.176 (0.077)**	0.192 (0.093)**	0.182 (0.093)*	0.125 (0.065)*	0.139 (0.073)*	0.156 (0.083)*	0.123 (0.08)	0.198 (0.108)*	0.166 (0.098)*
(2) In Bottom Half of Initial Distribution x Tracking School			-0.036 (0.07)			0.04 (0.07)			-0.091 (0.08)	
(3) In Bottom Quarter x Tracking School				-0.045 (0.08)			0.012 (0.09)			-0.083 (0.08)
(4) In Second to Bottom Quarter x Tracking School				-0.013 (0.07)			0.026 (0.08)			-0.042 (0.07)
(5) In Top Quarter x Tracking School				0.027 (0.08)			-0.026 (0.07)			0.065 (0.08)
(6) Assigned to Contract Teacher		0.181 (0.038)***	0.18 (0.038)***	0.18 (0.038)***		0.16 (0.038)***	0.161 (0.037)***		0.16 (0.038)***	0.16 (0.038)***
Individual Controls	no	yes	yes	yes	no	yes	yes	no	yes	yes
Observations	5795	5279	5279	5279	5796	5280	5280	5796	5280	5280
<b>Total effects on bottom half and bottom quarter</b>										
Coeff (Row 1)+Coeff (Row 2)			0.156			0.179			0.107	
Coeff (Row 1)+Coeff (Row 3)				0.137			0.168			0.083
F Test: Total Effect = 0			4.40	2.843		5.97	3.949		2.37	1.411
p-value (Total Effect for Bottom = 0)			0.038	0.095		0.016	0.049		0.127	0.237
p-value (Effect for Top quarter = Effect for Bottom Quarter)				0.507			0.701			0.209
<b>Panel B: Longer-Run Effects (a year after program ended)</b>										
(1) Tracking School	0.163 (0.069)**	0.178 (0.073)**	0.216 (0.079)***	0.235 (0.088)***	0.128 (0.059)**	0.143 (0.064)**	0.168 (0.075)**	0.16 (0.075)**	0.231 (0.089)**	0.241 (0.096)**
(2) In Bottom Half of Initial Distribution x Tracking School			-0.081 (0.06)			-0.027 (0.06)			-0.106 (0.06)	
(3) In Bottom Quarter x Tracking School				-0.117 (0.09)			-0.042 (0.10)			-0.152 (0.085)*
(4) In Second to Bottom Quarter x Tracking School				-0.096 (0.07)			-0.073 (0.07)			-0.091 (0.07)
(5) In Top Quarter x Tracking School				-0.028 (0.07)			-0.04 (0.06)			-0.011 (0.08)
(6) Assigned to Contract Teacher		0.094 (0.032)***	0.094 (0.032)***	0.094 (0.032)***		0.061 (0.031)**	0.061 (0.031)**		0.102 (0.031)***	0.103 (0.031)***
Individual Controls	no	yes	yes	yes	no	yes	yes	no	yes	yes
Observations	5490	5001	5001	5001	5490	5001	5001	5496	5007	5007
<b>Total effects on bottom half and bottom quarter</b>										
Coeff (Row 1)+Coeff (Row 2)			0.135			0.116			0.125	
Coeff (Row 1)+Coeff (Row 3)				0.118			0.126			0.089
p-value (Total Effect for Bottom = 0)			0.091	0.229		0.122	0.216		0.117	0.319
p-value (Effect for Top quarter = Effect for Bottom Quarter)				0.365			0.985			0.141

Notes: The sample includes 60 tracking and 61 non-tracking schools. The dependent variables are normalized test scores, with mean 0 and standard deviation 1 in the non-tracking schools. Robust standard errors clustered at the school level are presented in parentheses. \*\*\*, \*\*, \* indicates significance at the 1 percent, 5 percent and 10 percent levels respectively. Individual controls included: age, gender, being assigned to the contract teacher, dummies for initial half/quarter, and initial attainment percentile. We lose observations when adding individual controls because information on the initial attainment could not be collected in some of the non-tracking schools.

**Table III**  
**Testing for Heterogeneity in Effect of Tracking on Total Score**

	<b>Short-Run: After 18 months in program</b>			<b>Longer-Run: a year after program ended</b>		
	<i>Effect of Tracking on Total Score for</i>		<i>Test (Top = Bottom)</i>	<i>Effect of Tracking on Total Score for</i>		<i>Test (Top = Bottom)</i>
	Bottom Half	Top Half	p-value	Bottom Half	Top Half	p-value
	(1)	(2)	(3)	(4)	(5)	(6)
<b><u>Panel A: By Gender</u></b>						
Boys	0.130 (0.076)*	0.162 (0.100)	0.731	0.084 (0.083)	0.206 (0.084)**	0.168
Girls	0.188 (0.089)**	0.222 (0.104)**	0.661	0.190 (0.098)*	0.227 (0.089)**	0.638
Test (Boys = Girls): p-value	0.417	0.470		0.239	0.765	
<b><u>Panel B: By Teacher Type</u></b>						
Regular Teacher	0.048 (0.088)	0.225 (0.120)*	0.155	0.086 (0.099)	0.198 (0.098)**	0.329
Contract Teacher	0.255 (0.099)**	0.164 (0.118)	0.518	0.181 (0.094)*	0.246 (0.103)**	0.605
Test (Regular = Contract): p-value	0.076	0.683		0.395	0.702	
<b><u>Panel C: By Age</u></b>						
Younger than average	0.151 (0.088)*	0.287 (0.107)***	0.135	0.146 (0.093)	0.309 (0.088)***	0.062
Older than average	0.154 (0.095)	0.047 (0.098)	0.274	0.169 (0.109)	0.111 (0.092)	0.593
Test (Younger = Older): p-value	0.976	0.002		0.818	0.008	

*Notes: The sample includes 60 tracking and 61 non-tracking schools. The dependent variables are normalized test scores, with mean 0 and standard deviation 1 in the non-tracking schools. Robust standard errors clustered at the school level are presented in parentheses. \*\*\*, \*\*, \* indicates significance at the 1 percent, 5 percent and 10 percent levels respectively. Individual controls included: age, gender, being assigned to the contract teacher, dummies for initial half, and initial attainment percentile.*

**Table IV**  
**Peer Quality: Exogenous Variation in Peer Quality (Non-Tracking Schools Only)**

	ALL			25th-75th percentiles only	Bottom 25th percentiles	Top 25th percentiles only
	Total Score	Math Score	Lit Score	Total Score	Total Score	Total Score
	(1)	(2)	(3)	(4)	(5)	(6)
<b>Panel A: Reduced Form</b>						
Average Baseline Score of Classmates <sup>a</sup>	0.346 (0.150)**	0.323 (0.160)**	0.293 (0.131)**	-0.052 (0.227)	0.505 (0.199)**	0.893 (0.330)***
Observations	2188	2188	2188	2188	2188	2188
School Fixed Effects	x	x	x	x	x	x
<b>Panel B: IV</b>						
Average Endline Score of Classmates (predicted)	0.445 (0.117)***	0.470 (0.124)***	0.423 (0.120)***	-0.063 (0.306)	0.855 (0.278)***	1.052 (0.368)***
Observations	2188	2188	2189	1091	524	573
School Fixed Effects	x	x	x	x	x	x
<b>Panel C: First-Stage for IV: Average Endline Score of Classmates</b>						
	Average Total Score	Average Math Score	Average Lit Score	Average Total Score	Average Total Score	Average Total Score
Average (Standardized) Baseline Score of Classmates <sup>‡</sup>	0.768 (0.033)***	0.680 (0.033)***	0.691 (0.030)***	0.795 (0.056)***	0.757 (0.066)***	0.794 (0.070)***

*Notes: Sample restricted to the 61 non-tracking schools (where students were randomly assigned to a section). Individual controls included but not shown: gender, age, being assigned to the contract teacher, and own baseline score. Robust standard errors clustered at the school level in parentheses. \*\*\*, \*\*, \* indicates significance at the 1 percent, 5 percent and 10 percent levels respectively.*

<sup>a</sup> *This variable has a mean of 0.0009 and a standard deviation of 0.1056. We define classmates as follows: two students in the same section are classmates; two students in the same grade but different sections are not classmates.*

**Table V**  
**Peer Quality: Regression Discontinuity Approach (Tracking Schools Only)**

	Total Score						
	(1)	(2)	(3)	(4)	(5)	(6)	(7)
	Specification 1: With third order polynomial in baseline attainment		Specification 2: With second order polynomial in baseline attainment estimated separately on either side		Specification 3: With local linear regressions (Fan)		Specification 4: Pair around the median
<b><u>Panel A: Reduced Form</u></b>							
Estimated Effect of Bottom Section at 50th percentile	0.010 (0.093)	0.001 (0.079)	-0.045 (0.106)	-0.051 (0.089)	-0.016 (0.204)	0.034 (0.136)	0.027 (0.145)
Observations (Students)	2959	2959	2959	2959	2959	149	149
School Fixed Effects	no	yes	no	yes	no	no	yes
<b><u>Panel B: IV</u></b>							
Mean Total score of Peers	-0.012 (0.117)	-0.002 (0.106)				-0.068 (0.205)	-0.004 (0.277)
Observations (Students)	2959	2959				149	149
School Fixed Effects	no	yes				no	yes
<b><u>Panel C: First Stage for IV</u></b>							
	<i>Dep. Var:</i> Average Total Score of Peers				<i>Dep. Var:</i> Average Total Score of Peers		
In Bottom Half of Initial Distribution	-0.731 (0.047)***	-0.743 (0.021)***			-0.612 (0.090)***	-0.607 (0.058)***	
Observations (Students)	2959	2959			149	149	
R-squared	0.42	0.78			0.25	0.57	
School Fixed Effects	no	yes			no	yes	

*Notes: Sample restricted to the 60 tracking schools (where students were tracked into two sections by initial attainment). Students in the bottom half of the initial distribution were assigned to the "bottom section" where the average peer quality was much lower than in the top section (see Figure 2).*

*Panel A, columns 1-2 and 6-7: the score was regressed on a dummy "assigned to bottom section" and individual controls (age, gender, dummy for being assigned to contract teacher and, for columns 1 and 2, a polynomial in initial percentile). We present the estimated coefficient of the dummy "assigned to bottom section". Standard errors clustered at school level. \*\*\*, \*\*, \* indicates significance at the 1 percent, 5 percent and 10 percent levels respectively.*

*Panel A, columns 3-5: The estimated effect of being assigned to the bottom section is the difference between the estimates of the expectation function estimated separately on either side of the 50th percentile. In columns 3-4, the score was regressed on a second order polynomial in initial percentile fully interacted with a dummy for "bottom section". In column 5, the score was estimated through local linear regression (bandwidth = 2). Bootstrapped standard errors clustered at the school level. \*\*\*, \*\*, \* indicates significance at the 1 percent, 5 percent and 10 percent levels respectively.*

*Regressions in columns 6-7 include 1 pair of students per school: The top student in the bottom section and the bottom student in the top section. The number of observations is greater than 120 due to ties in some schools.*

*In Panel B, the mean score of class peers is instrumented by the dummy "In bottom half of initial distribution" and controls.*

**Table VI**  
**Teacher Effort and Student Presence**

	All Teachers		Government Teachers		ETP Teachers		Students
	(1)	(2)	(3)	(4)	(5)	(6)	(7)
	<i>Teacher Found in school on random school day</i>	<i>Teacher found in class teaching (unconditional on presence)</i>	<i>Teacher Found in school on random school day</i>	<i>Teacher found in class teaching (unconditional on presence)</i>	<i>Teacher Found in school on random school day</i>	<i>Teacher found in class teaching (unconditional on presence)</i>	<i>Student found in school on random school day</i>
Tracking School	0.041 (0.021)**	0.096 (0.038)**	0.054 (0.025)**	0.112 (0.044)**	-0.009 (0.034)	0.007 (0.045)	-0.015 (0.014)
Bottom Half x Tracking School	-0.049 (0.029)*	-0.062 (0.040)	-0.073 (0.034)**	-0.076 (0.053)	0.036 (0.046)	-0.004 (0.057)	0.003 (0.007)
Years of Experience Teaching	0.000 (0.001)	-0.005 (0.001)***	0.002 (0.001)*	0.002 (0.001)	-0.002 (0.003)	-0.008 (0.008)	
Female	-0.023 (0.018)	0.012 (0.026)	-0.004 (0.020)	0.101 (0.031)***	-0.034 (0.032)	-0.061 (0.043)	-0.005 (0.004)
Assigned to Contract Teacher							0.011 (0.005)**
Assigned to Contract Teacher x Tracking School							0.004 (0.008)
Observations	2098	2098	1633	1633	465	465	44059
Mean in Non-Tracking Schools	0.837	0.510	0.825	0.450	0.888	0.748	0.865
F (test of joint significance)	2.718	9.408	2.079	5.470	2.426	3.674	5.465
p-value	0.011	0.000	0.050	0.000	0.023	0.001	0.000

*Notes: The sample includes 60 tracking and 61 non-tracking schools. Linear probability model regressions. Multiple observations per teacher and per student. Standard errors clustered at school level. \*\*\*, \*\*, \* indicates significance at the 1 percent, 5 percent and 10 percent levels respectively. Region and date of test dummies were included in all regressions but are not shown.*

**Table VII**  
**Effect of Tracking by Level of Complexity and Initial Attainment**

	(1)	(2)	(3)	(4)	(5)	(6)	(7)	(8)
	Mathematics			Test	Literacy			
	Difficulty Level 1	Difficulty Level 2	Difficulty Level 3	Coeff (Col 3) = Coeff (Col 1)	Reading letters	Spelling Words	Reading Words	Reading Sentences
(1) In Bottom Half of Initial Distribution	-1.43 (0.09)***	-1.21 (0.08)***	-0.49 (0.05)***		-3.86 (0.33)***	-4.05 (0.42)***	-4.15 (0.40)***	-1.15 (0.21)***
(2) Tracking School	0.15 (0.10)	0.16 (0.12)	0.21 (0.10)**	$X^2 = 0.66$ p-value = 0.417	1.63 (0.65)**	1.00 (0.78)	1.08 (0.75)	0.38 (0.34)
(3) In Bottom Half of Initial Distribution x Tracking School	0.18 (0.14)	0.08 (0.12)	-0.10 (0.08)	$X^2 = 3.97$ p-value = 0.046	-0.42 (0.46)	-0.61 (0.61)	-0.39 (0.56)	-0.44 (0.30)
Constant	4.93 (0.23)***	1.82 (0.22)***	0.57 (0.16)***		11.64 (1.00)***	10.06 (1.20)***	10.12 (1.12)***	3.94 (0.56)***
Observations	5284	5284	5284		5283	5279	5284	5284
Maximum possible score	6	6	6		24	24	24	24
Mean in Non-Tracking Schools	4.16	1.61	0.67		6.99	5.52	5.00	2.53
Std Dev in Non-Tracking Schools	2.02	1.62	0.94		6.56	7.61	7.30	3.94
<b><u>Total effect of tracking on bottom half:</u></b>								
Coeff (Row 2)+Coeff (Row 3)	0.33	0.24	0.11	$X^2 = 2.34$ p-value = 0.126	1.21	0.39	0.69	-0.06
F Test: Coeff (Row 2)+Coeff (Row 3) = 0	3.63	6.39	4.42		4.74	0.70	1.82	0.09
p-value	0.06	0.01	0.04		0.03	0.40	0.18	0.76

Notes: The sample includes 60 tracking and 61 non-tracking schools. Robust standard errors clustered at the school level are presented in parentheses. \*\*\*, \*\*, \* indicates significance at the 1 percent, 5 percent and 10 percent levels respectively.

Difficulty level 1: addition or subtraction of 1 digit numbers

Difficulty level 2: addition or subtraction of 2 digit numbers, and multiplication of 1 digit numbers

Difficulty level 3: addition or subtraction of 3 digit numbers

**Appendix Table A1**  
**Does Attrition Vary Across Tracking and Non-Tracking Schools?**

	At Endline Test (after 18 months in program)				At Long-Run Follow-up Test (a year after program ended)	
	(1)	(2)	(3)	(4)	(5)	(6)
	Transferred to other school	If not transferred: missed test	Total Attrition	Total Attrition, Subsample Around Median	Total Attrition	Subsample Around Median
Tracking School	0.003 (0.012)	0.011 (0.019)	0.014 (0.022)	-0.015 (0.066)	0.000 (0.028)	-0.087 (0.067)
In Bottom Half of Initial Distribution	0.027 (0.016)*	-0.013 (0.020)	0.014 (0.025)	-0.006 (0.075)	0.050 (0.028)*	0.042 (0.073)
In Bottom Half of Initial Distribution x Tracking School	-0.012 (0.013)	0.02 (0.019)	0.007 (0.023)	0.043 (0.083)	0.006 (0.026)	0.041 (0.080)
Girl	0.012 (0.009)	0.029 (0.014)**	0.041 (0.016)**	0.020 (0.049)	0.024 (0.016)	0.055 (0.060)
Girl x Tracking School	0.004 (0.013)	-0.048 (0.016)***	-0.044 (0.019)**	-0.026 (0.067)	-0.022 (0.021)	0.039 (0.079)
Assigned to Contract Teacher	-0.006 (0.010)	-0.019 (0.011)*	-0.025 (0.014)*	-0.078 (0.046)*	-0.014 (0.015)	-0.086 (0.055)
Assigned to Contract Teacher x Tracking School	0.018 (0.015)	0.009 (0.019)	0.027 (0.025)	0.056 (0.076)	0.038 (0.026)	0.142 (0.092)
In Bottom Half of Initial Distribution x Assigned to Contract Teacher x Tracking School	0.01 (0.019)	-0.035 (0.030)	-0.025 (0.036)	-0.01 (0.093)	-0.011 (0.037)	0.031 (0.104)
Constant	0.034 (0.018)*	0.172 (0.026)***	0.205 (0.032)***	-0.737 (1.664)	0.23 (0.034)***	2.11 (1.747)
Observations	7345	7345	7345	517	7340	515
Mean	0.057	0.119	0.175	0.175	0.224	0.224

*Notes: OLS Regressions; standard errors clustered at school level. Additional controls not shown: a third degree polynomial in the student's percentile in the initial attainment distribution. Columns 4 and 6: restricted to students within 0.1 standard deviation of median at baseline.*